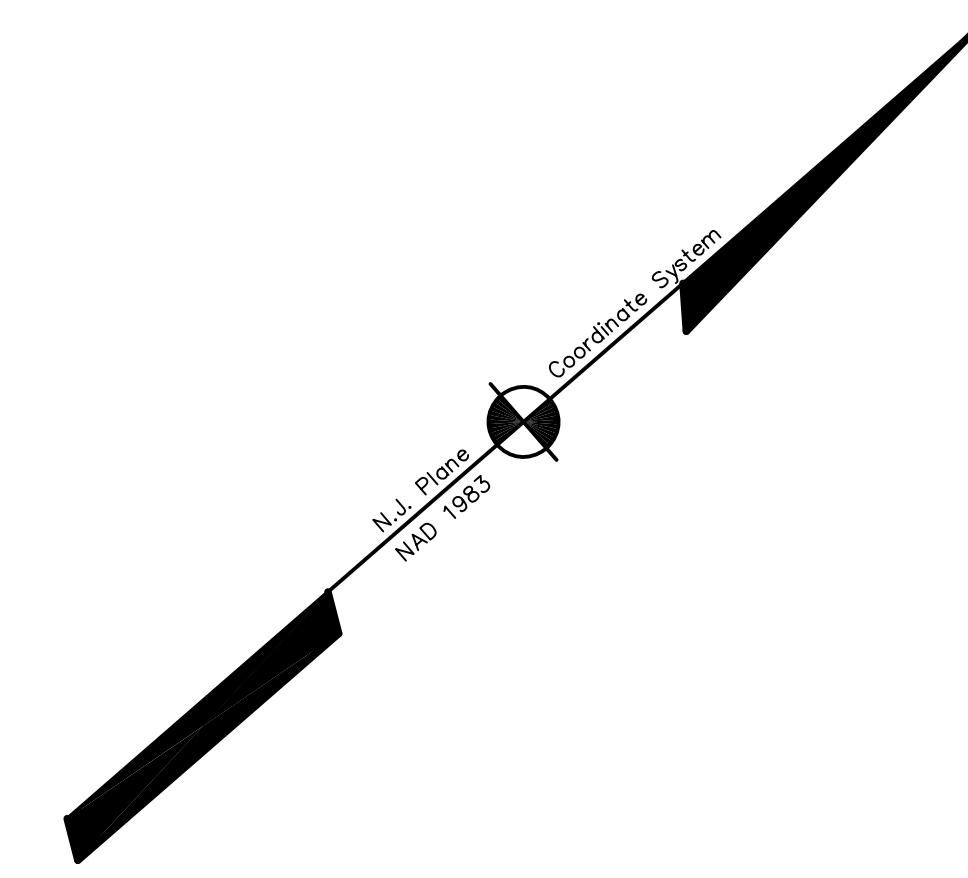
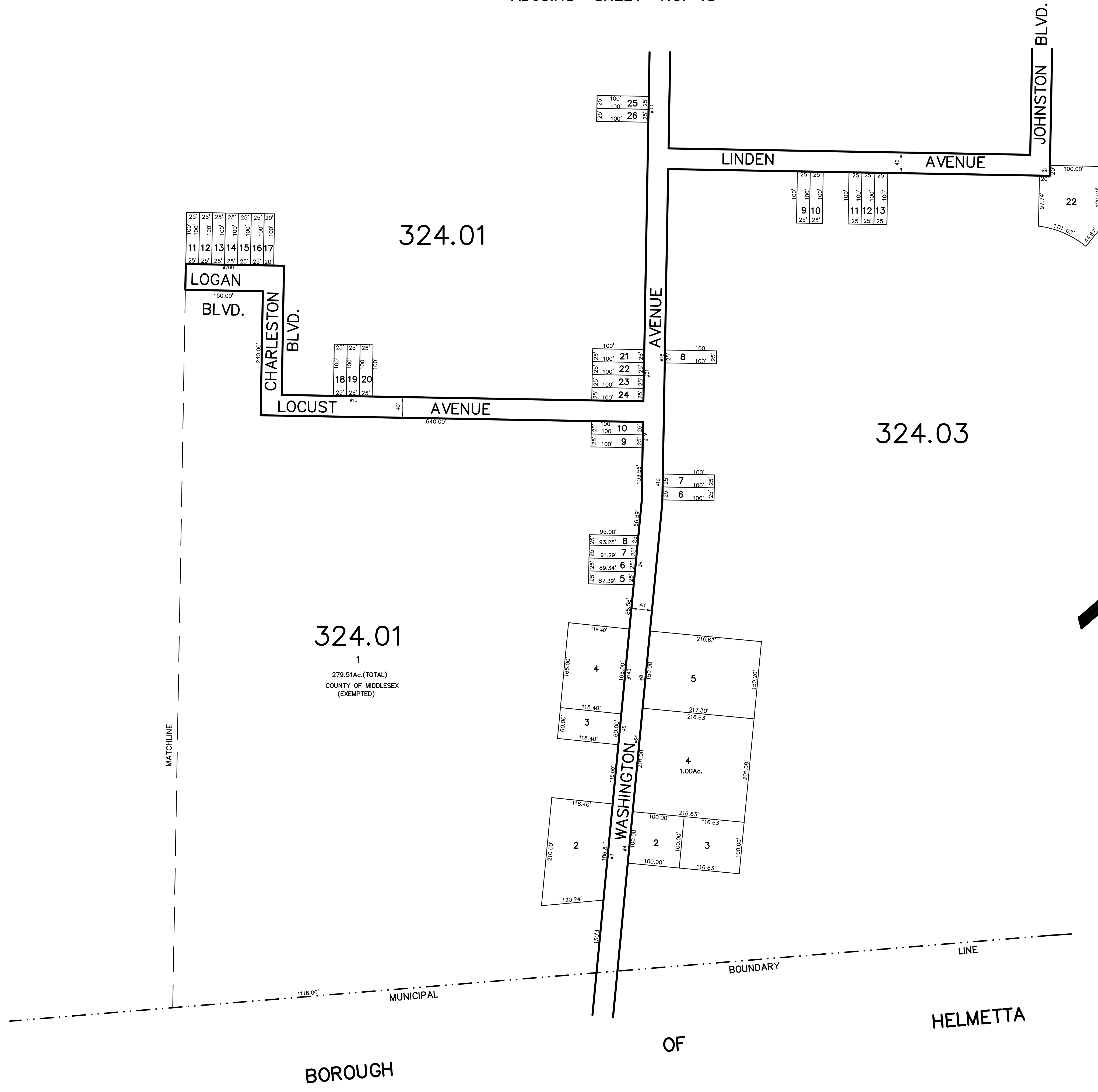


ADJOINS SHEET NO. 48

ADJOINS SHEET NO. 47

ADJOINS SHEET NO. 48



NEW JERSEY DEPARTMENT OF THE TREASURY
 DIVISION OF TAXATION
 PROPERTY ADMINISTRATION
 APPROVED AS A TAX MAP PURSUANT TO THE AUTHORITY OF
 N.J.A.C. 17:27 & 17:28
 FOR THE DIRECTOR, DIVISION OF TAXATION
James J. Cole C.T.A.
 JAMES J. COLE, CHIEF, LOCAL ASSESSMENT COMPLIANCE
Santo C. DiDonato C.T.A.
 SANTO C. DIDONATO, SUPERVISING FIELD REPRESENTATIVE
 DATE: DEC 20 2004 SERIAL NO.: 852

THIS MAP HAS BEEN DRAWN USING COMPUTER AIDED
 DRAFTING/DESIGN (CAD/D) AND COORDINATE
 GEOMETRY (COGO)

TAX MAP
EAST BRUNSWICK TOWNSHIP
MIDDLESEX COUNTY, NEW JERSEY
 SCALE: 1" = 100' DATE: 5-1-2003
JOHN D. BERGLER
 LICENSED LAND SURVEYOR No. 37181
 195 WASHINGTON ROAD
 SAYREVILLE, NEW JERSEY