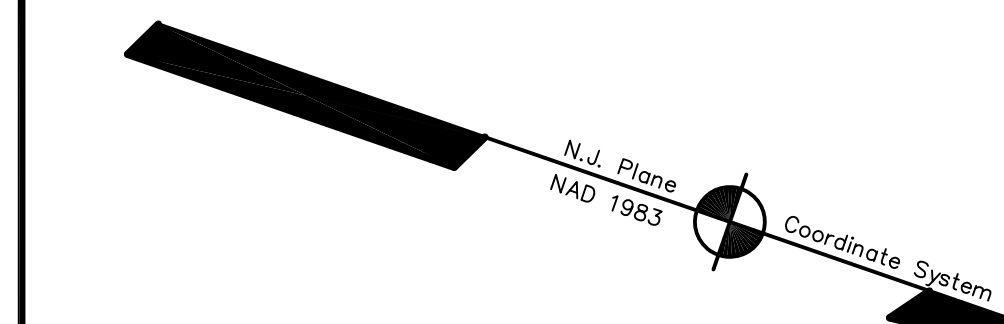
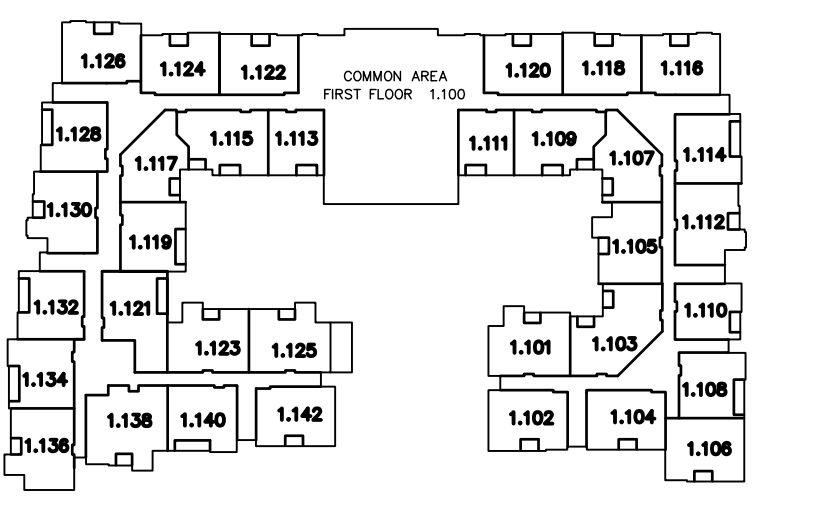
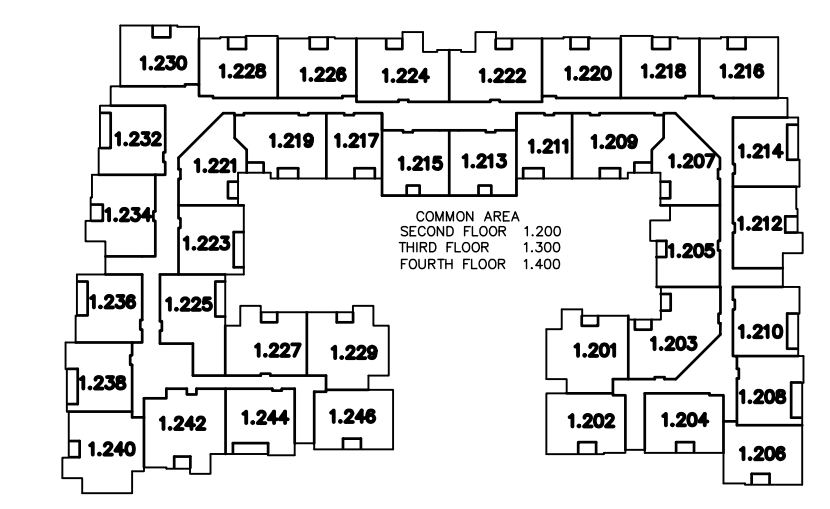
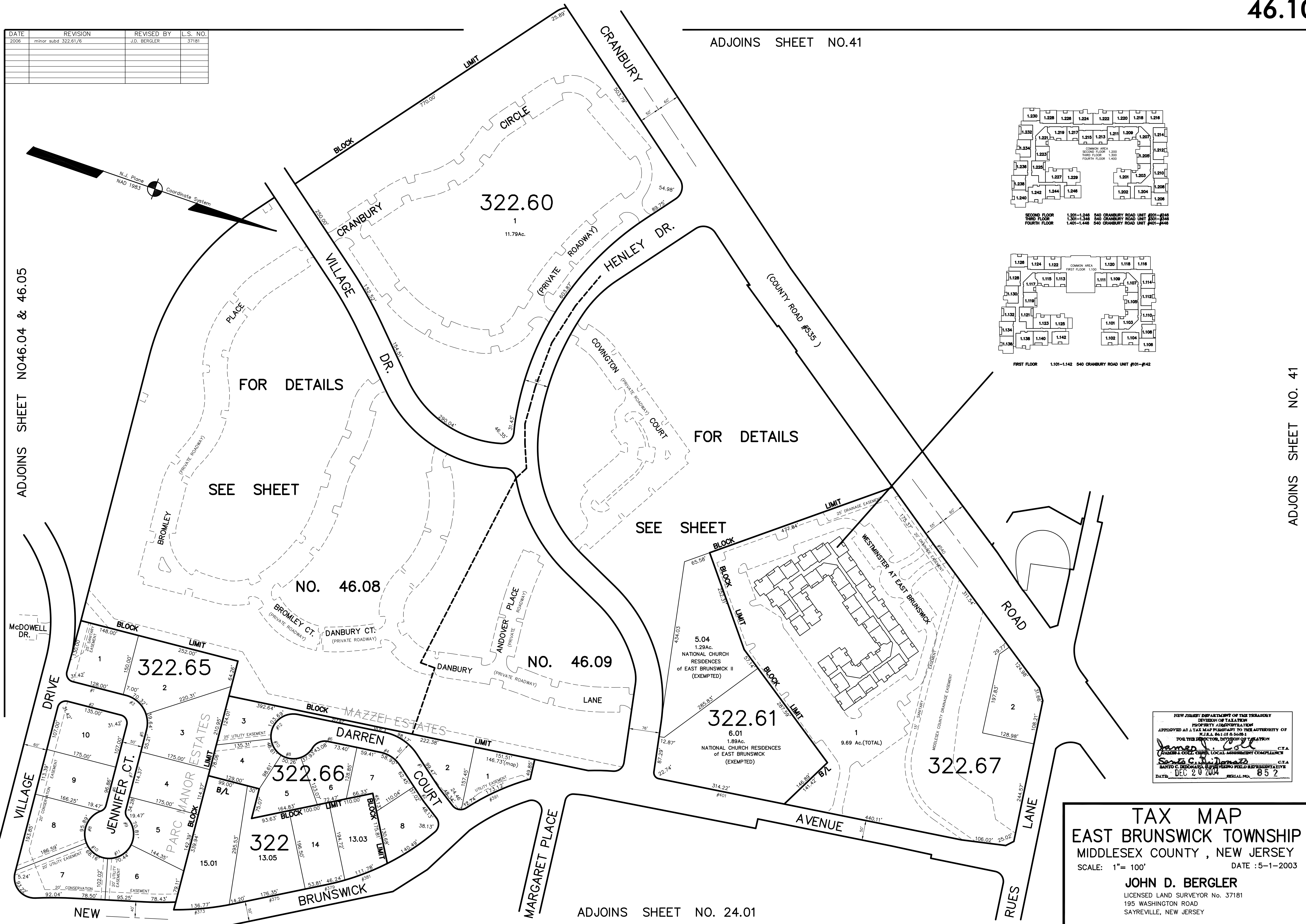


DATE	REVISION	REVISED BY	L.S. NO.
2006	minor subd. 322.61/6	J.D. BERGLER	37181

ADJOINS SHEET NO.41



ADJOINS SHEET NO46.04 & 46.05



NEW JERSEY DEPARTMENT OF TREASURY
DIVISION OF TAXATION
PROPERTY ADMINISTRATION
APPROVED AS A TAX MAP PURSUANT TO THE AUTHORITY OF
N.J.A.C. 17:27 & 17:28
FOR THE DIRECTOR, DIVISION OF TAXATION

John D. Bergler C.T.A.
John D. Bergler C.T.A.
DATE: DEC 20 2004 SERIAL NO. 852

TAX MAP
EAST BRUNSWICK TOWNSHIP
MIDDLESEX COUNTY, NEW JERSEY
SCALE: 1" = 100' DATE :5-1-2003
JOHN D. BERGLER
LICENSED LAND SURVEYOR No. 37181
195 WASHINGTON ROAD
SAYREVILLE, NEW JERSEY

ADJOINS SHEET NO. 24.01

ADJOINS SHEET NO. 41