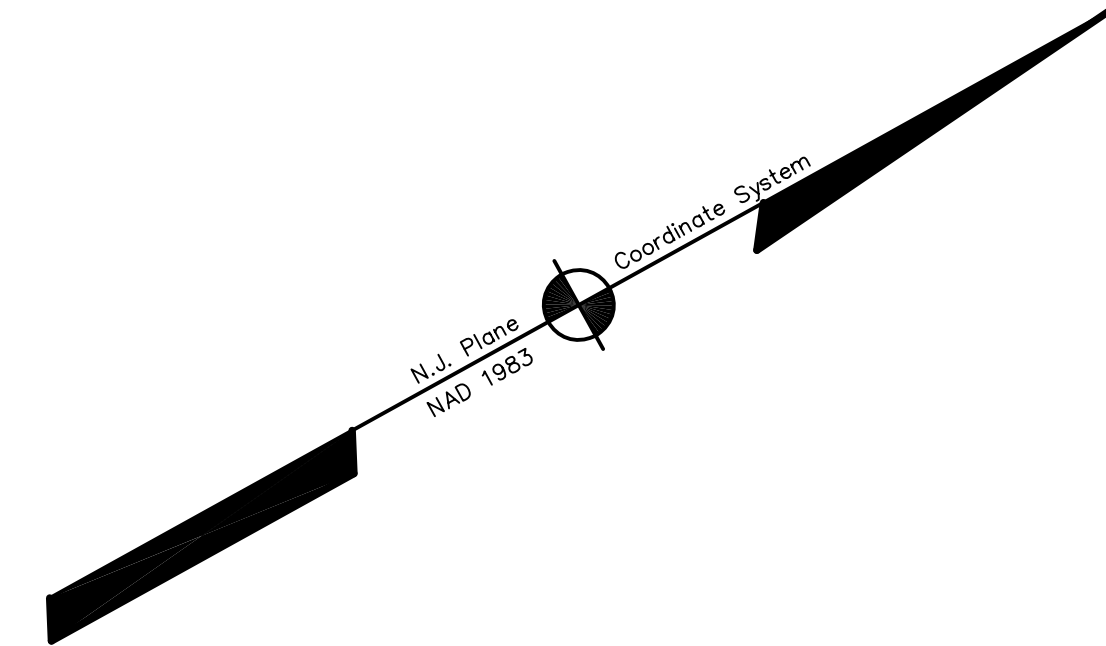
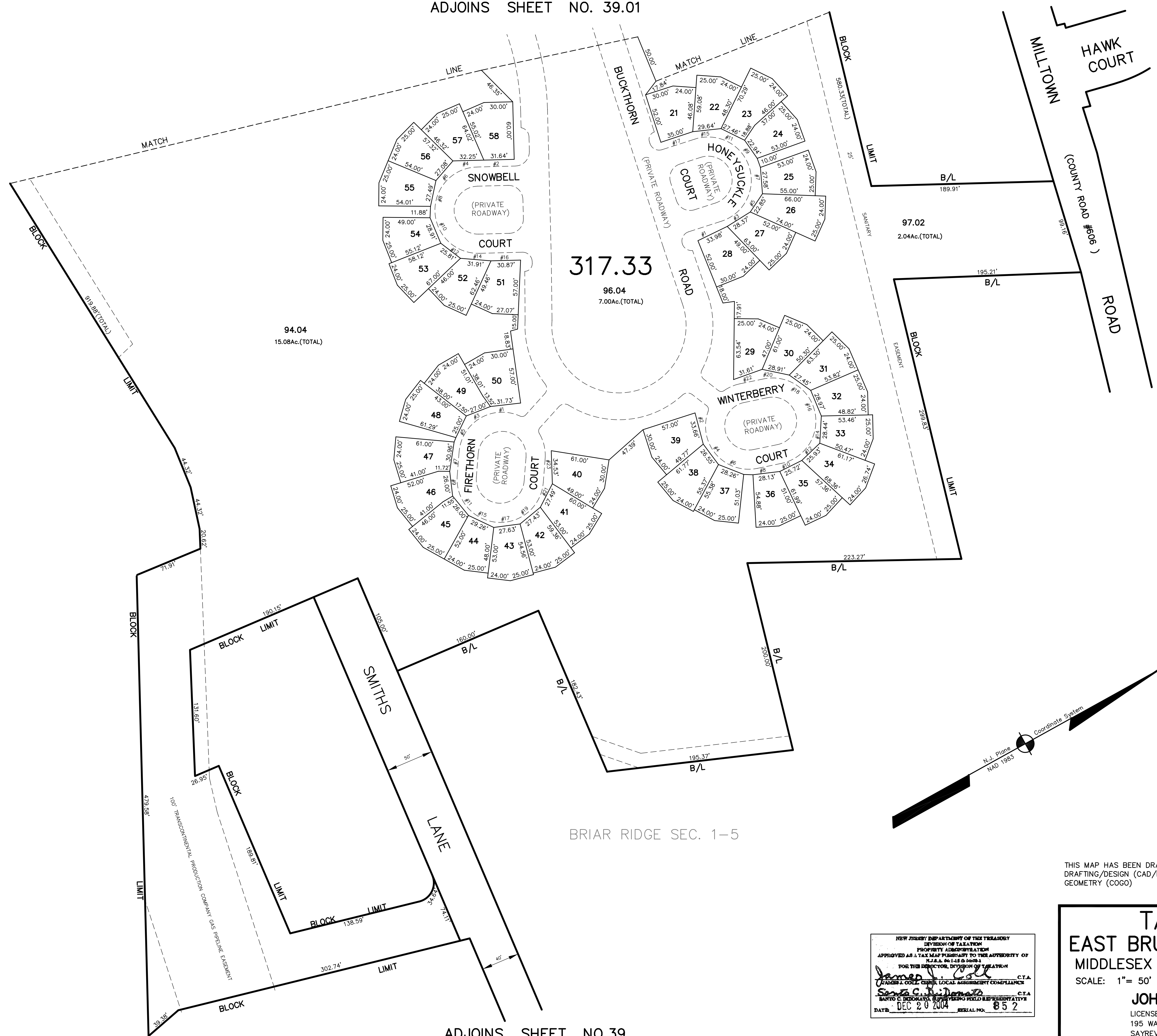


ADJOINS SHEET NO. 39.01

ADJOINS SHEET NO. 38.03

ADJOINS SHEET NO. 39



THIS MAP HAS BEEN DRAWN USING COMPUTER AIDED DRAFTING/DESIGN (CAD/D) AND COORDINATE GEOMETRY (COGO)

NEW JERSEY DEPARTMENT OF THE TREASURY  
 DIVISION OF TAXATION  
 PROPERTY ADVALOREM  
 APPROVED AS A TAX MAP PURSUANT TO THE AUTHORITY OF  
 N.J.A.C. 17:27 & 17:28  
 FOR THE DIRECTOR, DIVISION OF TAXATION  
*James J. [Signature]* C.T.A.  
 SUPERVISOR, LOCAL ASSESSMENT COMPLIANCE  
*Santa C. [Signature]* C.T.A.  
 BANTO C. BORDABANDA, SUPERVISOR FIELD REPRESENTATIVE  
 DATE: DEC 20 2004 SERIAL NO. 852

**TAX MAP**  
**EAST BRUNSWICK TOWNSHIP**  
**MIDDLESEX COUNTY, NEW JERSEY**  
 SCALE: 1" = 50' DATE: 5-1-2003  
**JOHN D. BERGLER**  
 LICENSED LAND SURVEYOR No. 37181  
 195 WASHINGTON ROAD  
 SAYREVILLE, NEW JERSEY

ADJOINS SHEET NO.39