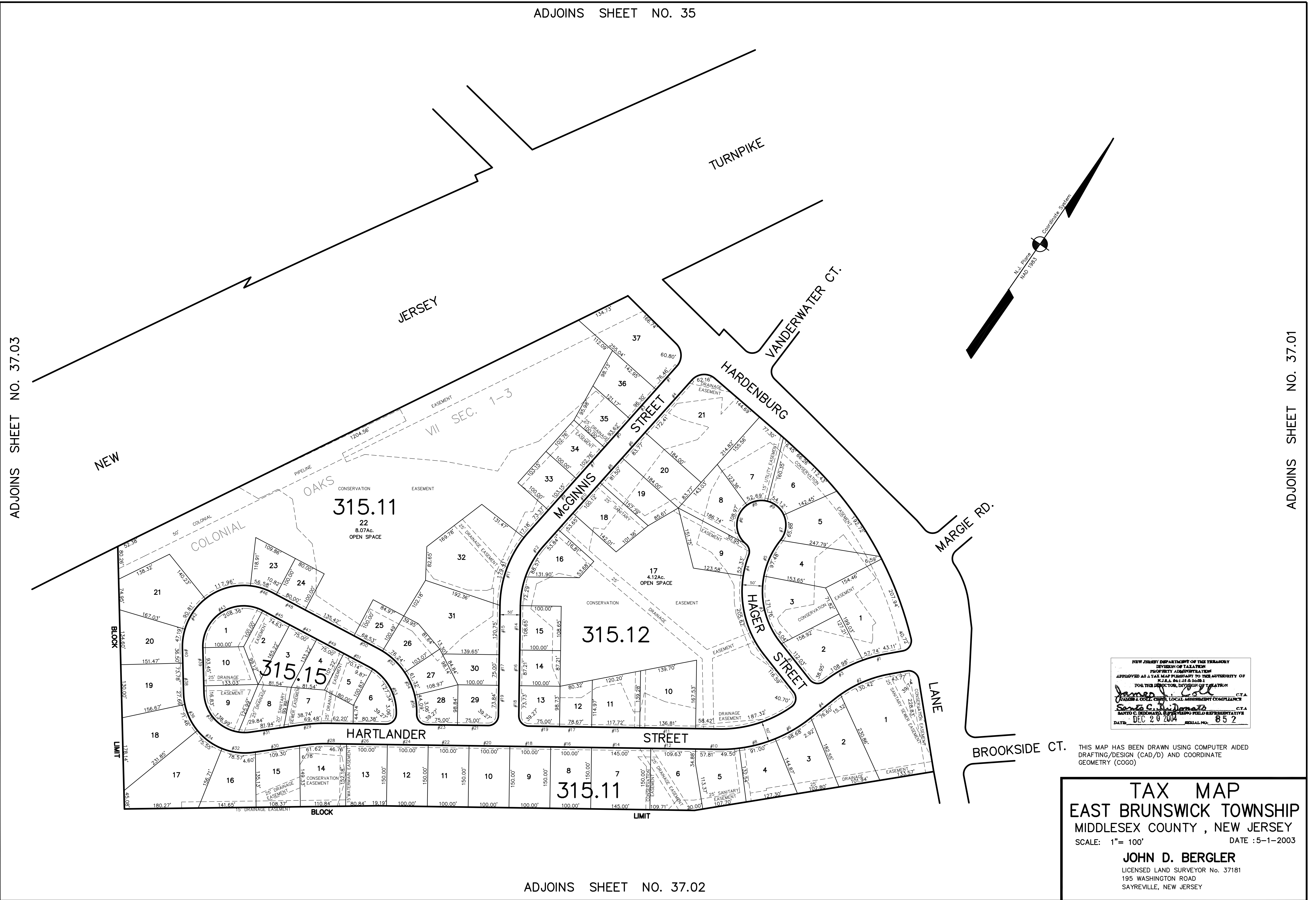


ADJOINS SHEET NO. 35

ADJOINS SHEET NO. 37.03

ADJOINS SHEET NO. 37.01



NEW JERSEY DEPARTMENT OF THE TREASURY
 DIVISION OF TAXATION
 APPROVED AS A TAX MAP PRESENTED TO THE AUTHORITY OF
 N.J.A.C. 17:27, PAR. 2.1
 FOR THE DIRECTOR, DIVISION OF TAXATION
James J. Coll C.T.A.
Santa C. DiDomenico C.T.A.
 DATE: DEC 20 2004 SERIAL NO: 852

THIS MAP HAS BEEN DRAWN USING COMPUTER AIDED
 DRAFTING/DESIGN (CAD/D) AND COORDINATE
 GEOMETRY (COGO)

TAX MAP
EAST BRUNSWICK TOWNSHIP
MIDDLESEX COUNTY, NEW JERSEY
 SCALE: 1" = 100' DATE :5-1-2003
JOHN D. BERGLER
 LICENSED LAND SURVEYOR No. 37181
 195 WASHINGTON ROAD
 SAYREVILLE, NEW JERSEY

ADJOINS SHEET NO. 37.02