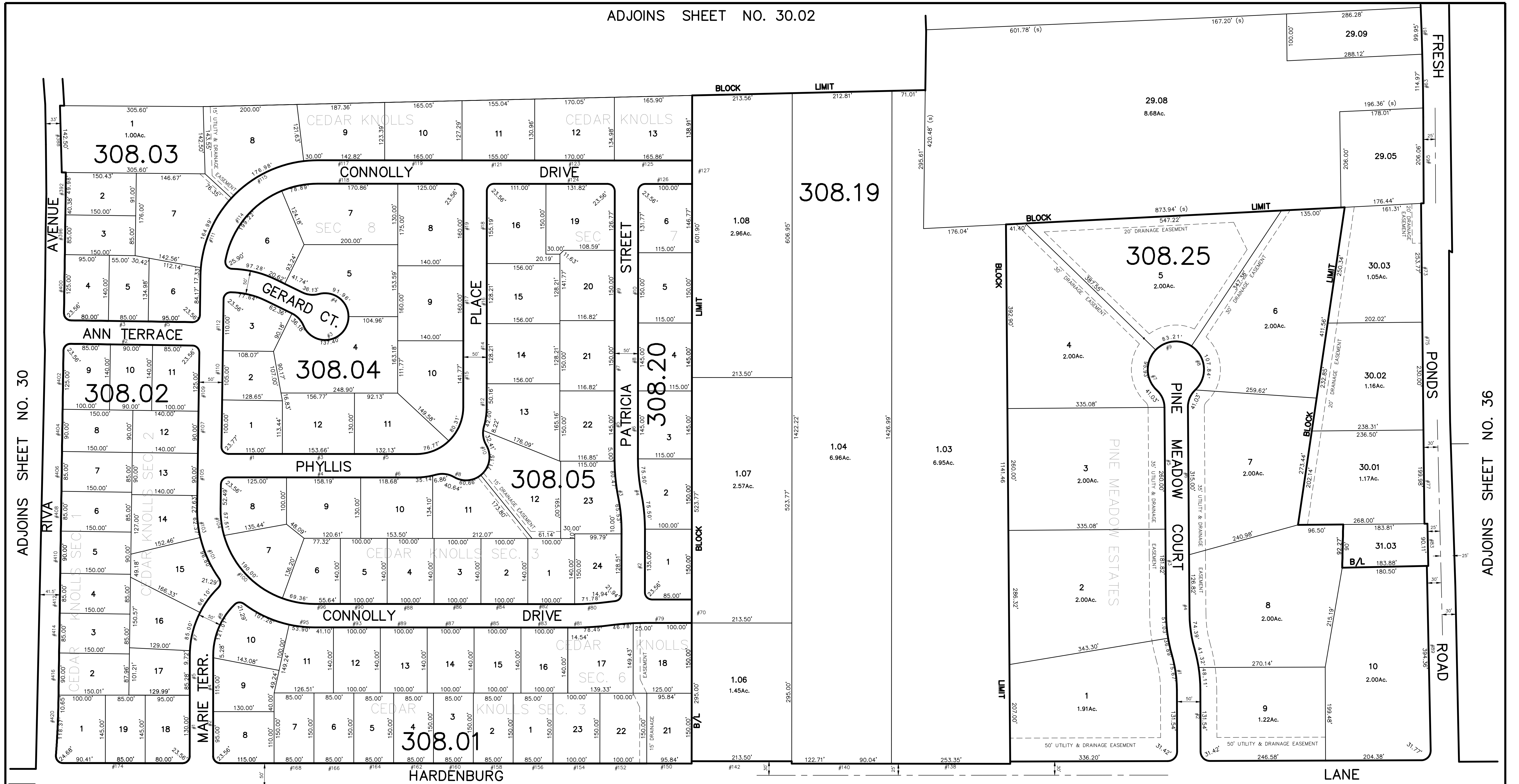
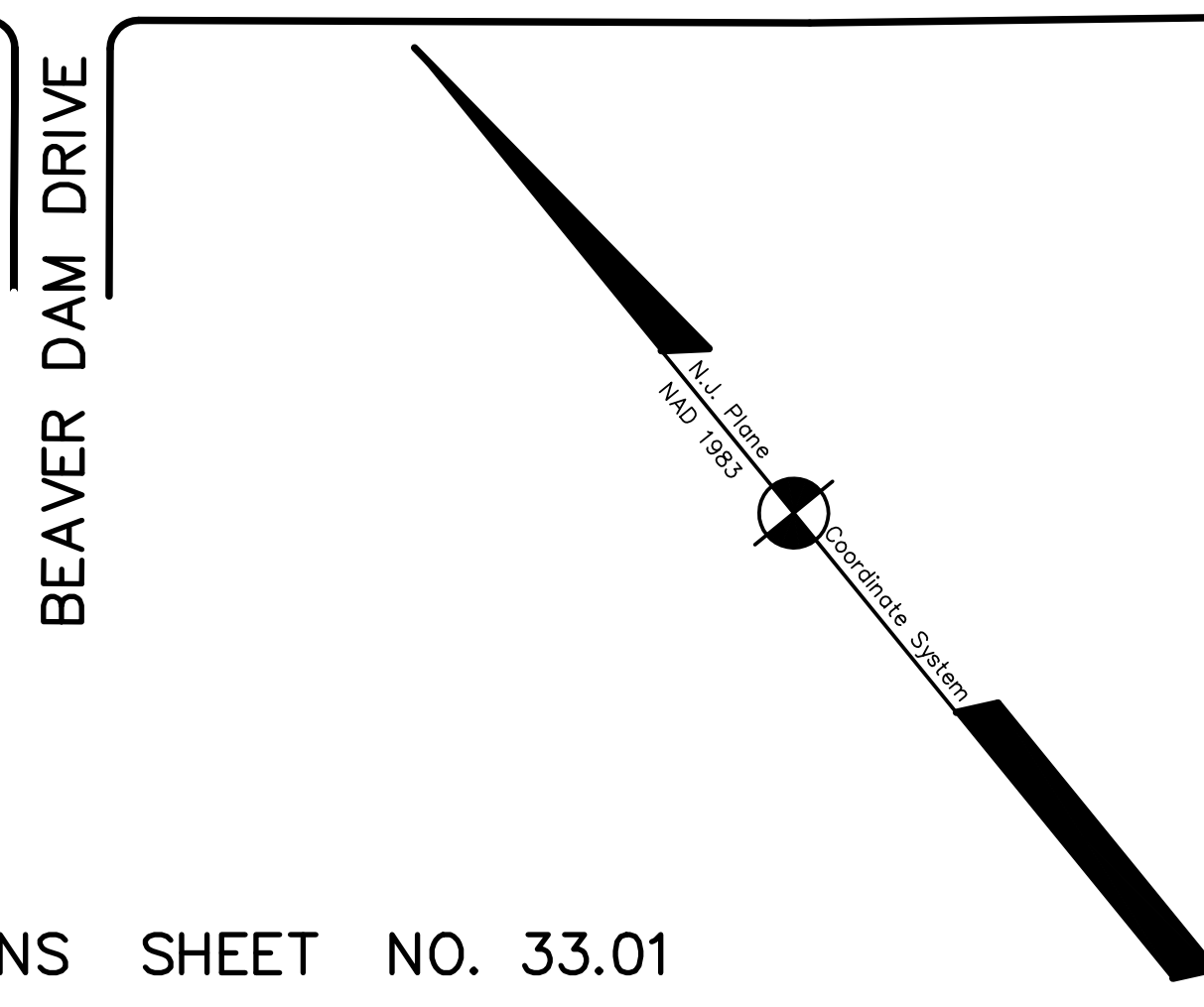
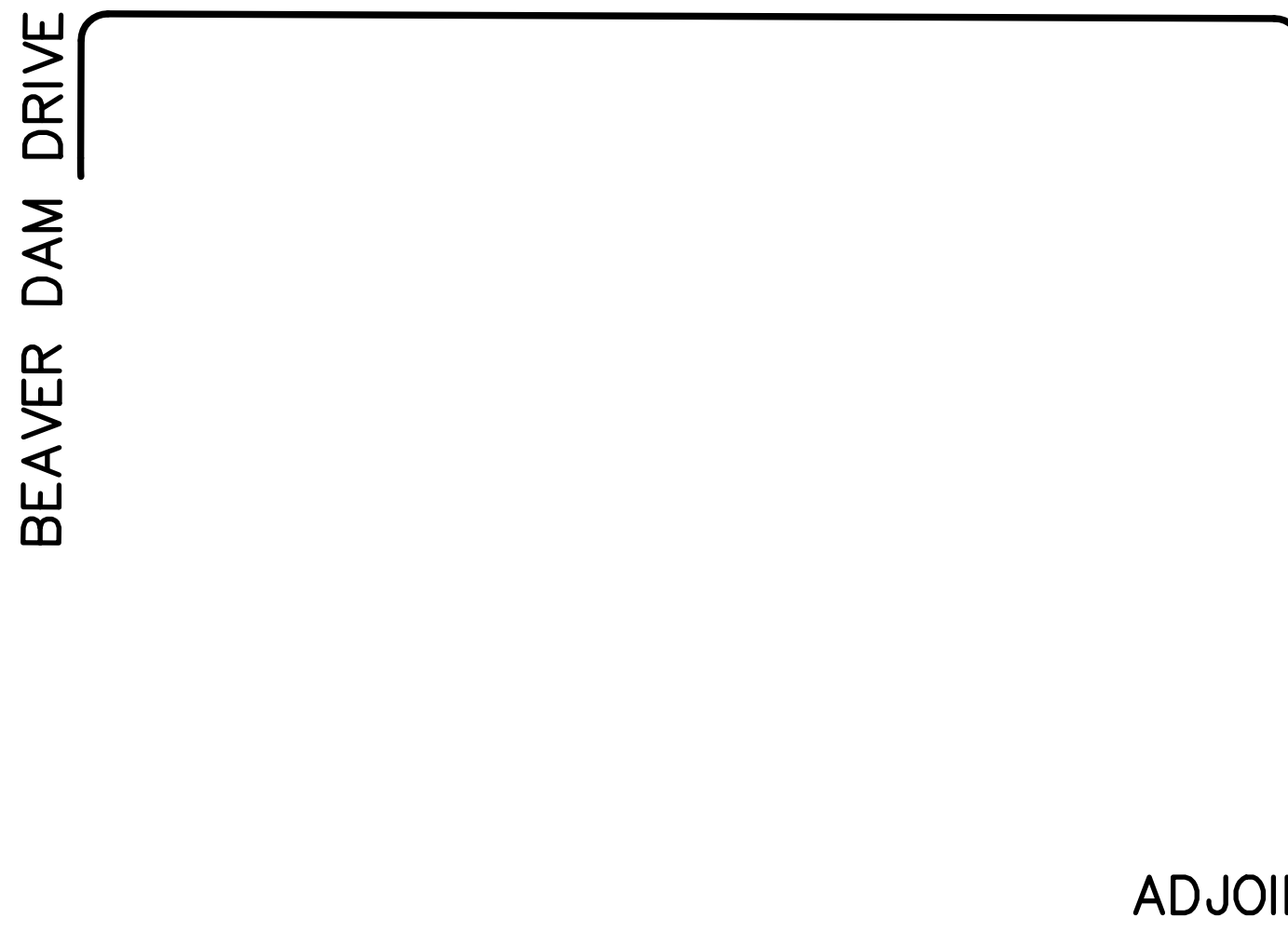


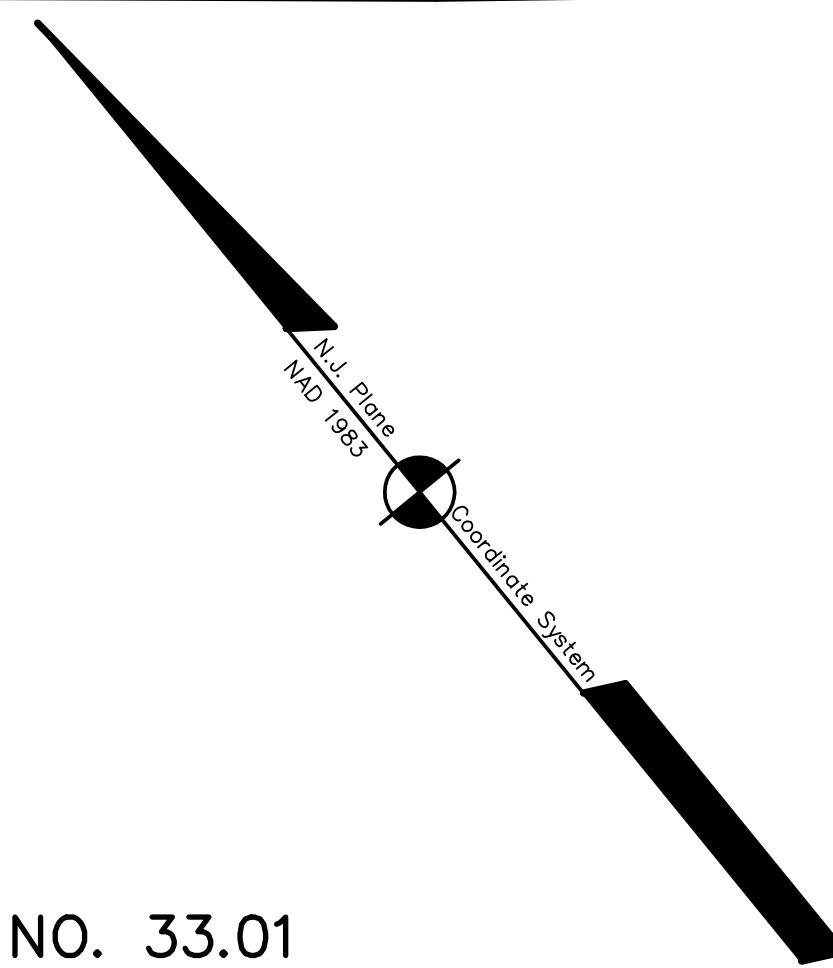
ADJOINS SHEET NO. 30.02



DATE	REVISION	REVISED BY	L.S. NO.
2014	minor subd. 308.19/29.08,29.09	J.D. BERGLER	37181



ADJOINS SHEET NO. 33.01



NEW JERSEY DEPARTMENT OF THE TREASURY
 DIVISION OF TAXATION
 PROPERTY ADMINISTRATION
 APPROVED AS A TAX MAP PURSUANT TO THE AUTHORITY OF
 N.J.A.C. 17:27 & 17:28
 FOR THE DIRECTOR, DIVISION OF TAXATION
James J. Call C.T.A.
 TAX MAP 2 COLLECTOR LOCAL ASSESSMENT COMPLIANCE
James J. Call C.T.A.
 DATE: DEC 2 0 2004 SERIAL NO: 852

THIS MAP HAS BEEN DRAWN USING COMPUTER AIDED
 DRAFTING/DESIGN (CAD/D) AND COORDINATE
 GEOMETRY (COGO)

TAX MAP
EAST BRUNSWICK TOWNSHIP
MIDDLESEX COUNTY, NEW JERSEY
 SCALE: 1" = 100' DATE :5-1-2003

JOHN D. BERGLER
 LICENSED LAND SURVEYOR No. 37181
 195 WASHINGTON ROAD
 SAYREVILLE, NEW JERSEY