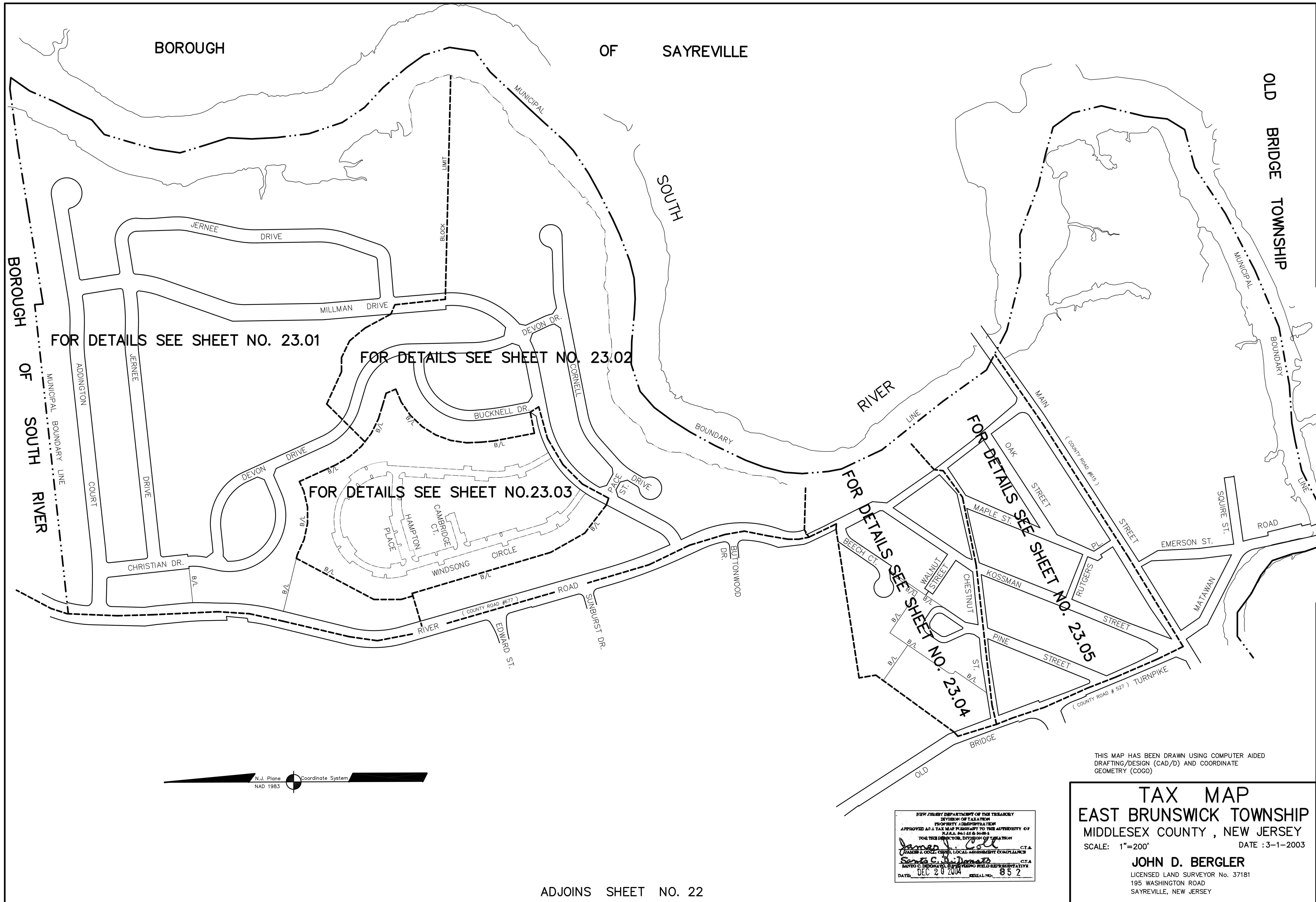


BOROUGH OF SAYREVILLE



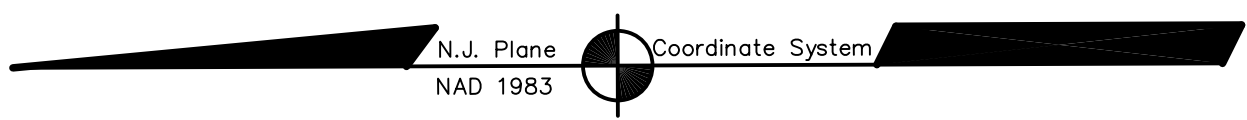
FOR DETAILS SEE SHEET NO. 23.01

FOR DETAILS SEE SHEET NO. 23.02

FOR DETAILS SEE SHEET NO. 23.03

FOR DETAILS SEE SHEET NO. 23.04

FOR DETAILS SEE SHEET NO. 23.05



ADJOINS SHEET NO. 22

NEW JERSEY DEPARTMENT OF THE TREASURY
 DIVISION OF TAXATION
 PROPERTY ADMINISTRATION
 APPROVED AS A TAX MAP PURSUANT TO THE AUTHORITY OF
 P.L.A. 84-45 & 84-66
 FOR THE DIRECTOR, DIVISION OF TAXATION
James J. Cole C.T.A.
 JAMES J. COLE, CHIEF, LOCAL ASSESSMENT COMPLIANCE
James C. Bergler C.T.A.
 JAMES C. BERGLER, CHIEF, FIELD REPRESENTATIVE
 DATE: DEC 20 2004 SERIAL NO. 852

THIS MAP HAS BEEN DRAWN USING COMPUTER AIDED DRAFTING/DESIGN (CAD/D) AND COORDINATE GEOMETRY (COGO)

TAX MAP
EAST BRUNSWICK TOWNSHIP
 MIDDLESEX COUNTY, NEW JERSEY
 SCALE: 1"=200' DATE: 3-1-2003
JOHN D. BERGLER
 LICENSED LAND SURVEYOR No. 37181
 195 WASHINGTON ROAD
 SAYREVILLE, NEW JERSEY