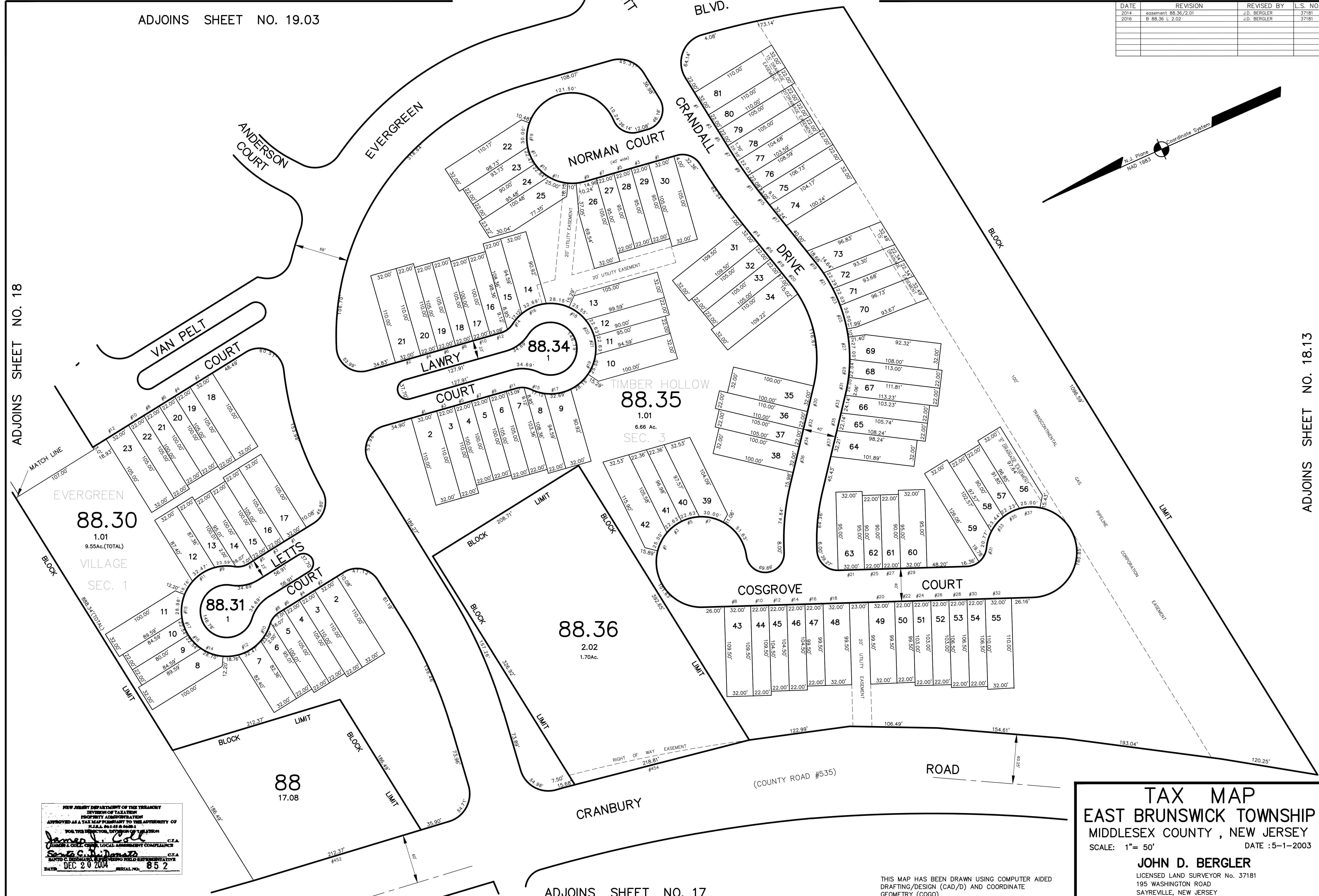


ADJOINS SHEET NO. 19.03

DATE	REVISION	REVISED BY	L.S. NO.
2014	esement 88.36/2.01	J.D. BERGLER	37181
2016	B 88.36 L 2.02	J.D. BERGLER	37181



ADJOINS SHEET NO. 18

ADJOINS SHEET NO. 18.13

NEW JERSEY DEPARTMENT OF THE TREASURY  
 DIVISION OF TAXATION  
 PROPERTY ASSESSMENT  
 APPROVED AS A TAX MAP PURSUANT TO THE AUTHORITY OF  
 PLURA, §§ 144 & 146-1  
 FOR THE DIRECTOR, DIVISION OF TAXATION  
 JAMES L. COLLIER, LOCAL ASSESSMENT COMPLIANCE C.T.A.  
 SANTI C. DOMINARI, COUNTY FIELD REPRESENTATIVE C.T.A.  
 DATE: DEC 20 2004 SERIAL NO. 852

**TAX MAP**  
**EAST BRUNSWICK TOWNSHIP**  
**MIDDLESEX COUNTY, NEW JERSEY**  
 SCALE: 1" = 50'  
 DATE: 5-1-2003  
**JOHN D. BERGLER**  
 LICENSED LAND SURVEYOR No. 37181  
 195 WASHINGTON ROAD  
 SAYREVILLE, NEW JERSEY

THIS MAP HAS BEEN DRAWN USING COMPUTER AIDED  
 DRAFTING/DESIGN (CAD/D) AND COORDINATE  
 GEOMETRY (COGO)

ADJOINS SHEET NO. 17