

ADJOINS SHEET NO. 15  
MERRILL AVE.

N.J. STATE HWY RT. 18

CRANBURY BOARD OF EDUCATION  
EAST BRUNSWICK HIGH SCHOOL  
(EXEMPTED)  
19.13  
2.27Ac.

88

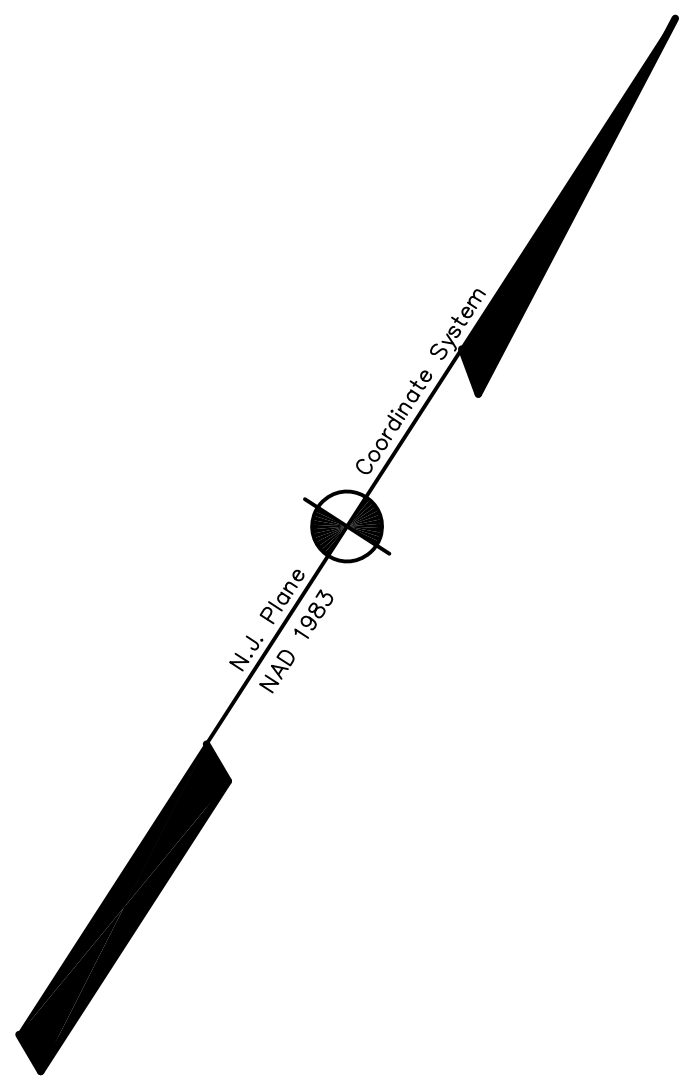
19.09  
57.85Ac.  
BOARD OF EDUCATION  
EAST BRUNSWICK HIGH SCHOOL  
(EXEMPTED)

88.18  
BOARD OF EDUCATION  
(EXEMPTED)

2.22  
40.50Ac.  
BOARD OF EDUCATION  
EAST BRUNSWICK HIGH SCHOOL  
(EXEMPTED)

ADJOINS SHEET NO. 17

ADJOINS SHEET NO. 20



THIS MAP HAS BEEN DRAWN USING COMPUTER AIDED  
DRAFTING/DESIGN (CAD/D) AND COORDINATE  
GEOMETRY (COGO)

NEW JERSEY DEPARTMENT OF THE TREASURY  
DIVISION OF TAXATION  
PROPERTY ADJUSTMENT  
APPROVED AS A TAX MAP PURSUANT TO THE AUTHORITY OF  
N.J.A.C. 17:27A & 17:27B  
FOR THE DIRECTOR, DIVISION OF TAXATION  
*James J. ...* C.T.A.  
*...* C.T.A.  
DATE: DEC 20 2004 SERIAL NO. 852

**TAX MAP**  
EAST BRUNSWICK TOWNSHIP  
MIDDLESEX COUNTY, NEW JERSEY  
SCALE: 1"=200' DATE: 5-1-2003  
**JOHN D. BERGLER**  
LICENSED LAND SURVEYOR NO. 37181  
195 WASHINGTON ROAD  
SAYREVILLE, NEW JERSEY

ADJOINS SHEET NO. 18