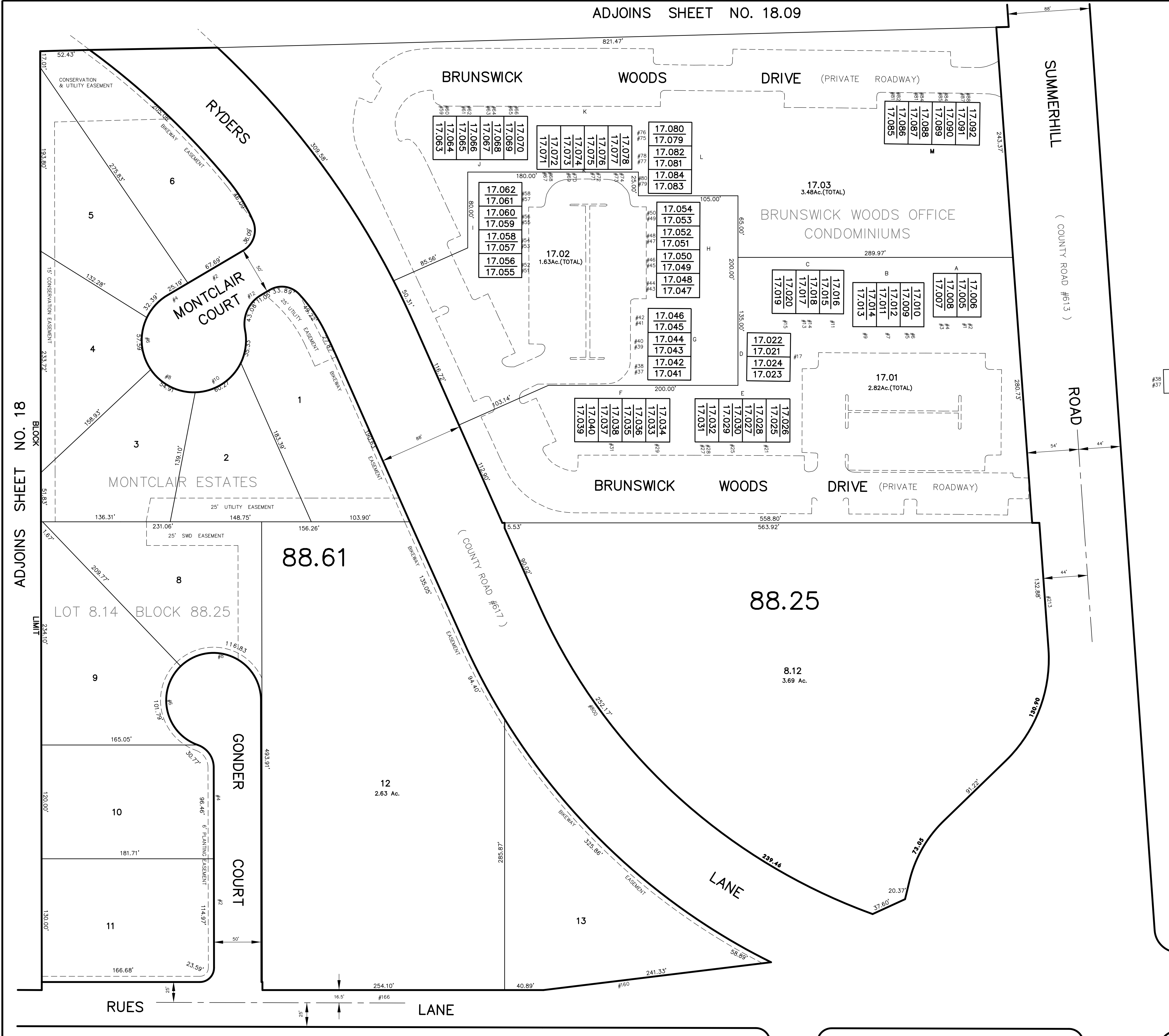


ADJOINS SHEET NO. 18.09

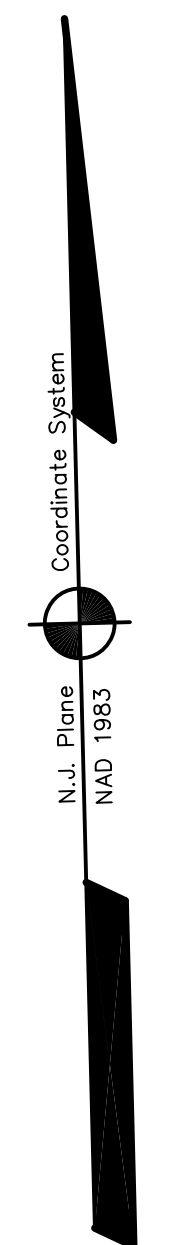
DATE	REVISION	REVISED BY	L.S. NO.
2006	new subd. Gonder Ct.	J.D. BERGLER	37181



#38
#37

17.024 — UPPER LEVEL
17.023 — LOWER LEVEL

B — BUILDING NUMBER



NEW JERSEY DEPARTMENT OF THE TREASURY
DIVISION OF TAXATION
PROPERTY ADJUSTMENT
APPROVED AS A TAX MAP PRESENTED TO THE AUTHORITY OF
PLER. 861.13 & 869.1
FOR THE DIRECTOR, DIVISION OF TAXATION
James J. [Signature] C.T.A.
JAMES & CO., LLC, LOCAL ASSESSMENT COMPLIANCE
Santo C. [Signature] C.T.A.
SANTO C. [Signature] REPRESENTATIVE FIELD REPRESENTATIVE
DATE: DEC 20 2004 SERIAL NO. 852

THIS MAP HAS BEEN DRAWN USING COMPUTER AIDED
DRAFTING/DESIGN (CAD/D) AND COORDINATE
GEOMETRY (COGO)

TAX MAP
EAST BRUNSWICK TOWNSHIP
MIDDLESEX COUNTY, NEW JERSEY
SCALE: 1"=50' DATE: 5-1-2003
JOHN D. BERGLER
LICENSED LAND SURVEYOR No. 37181
195 WASHINGTON ROAD
SAYREVILLE, NEW JERSEY

ADJOINS SHEET NO. 18