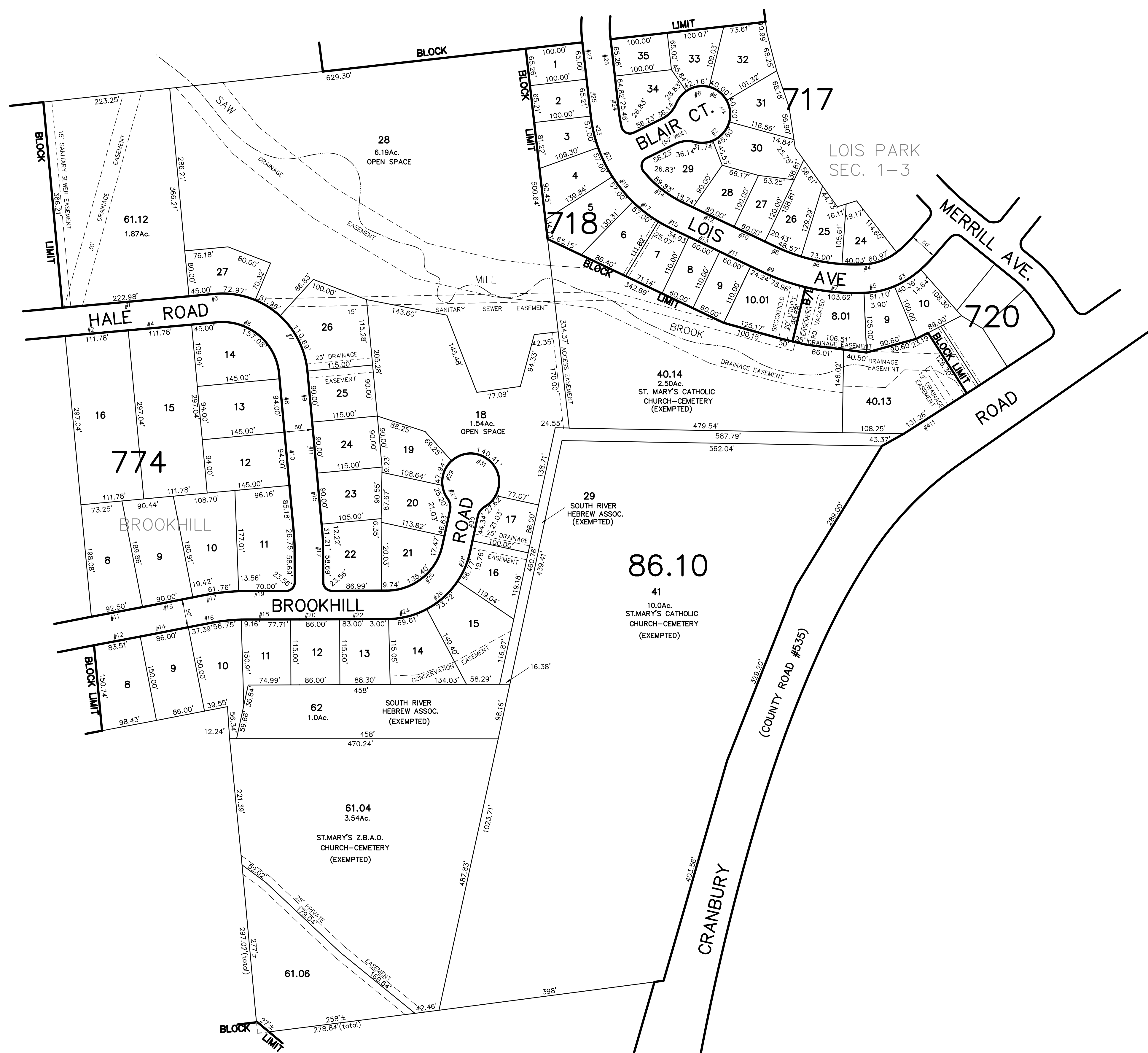


ADJOINS SHEET NO. 14.03&15.01

ADJOINS SHEET NO.14.03&16.03

ADJOINS SHEET NO. 15.03



ADJOINS SHEET NO.16.03

THIS MAP HAS BEEN DRAWN USING COMPUTER AIDED DRAFTING/DESIGN (CAD/D) AND COORDINATE GEOMETRY (COGO)

NEW JERSEY DEPARTMENT OF THE TREASURY
 DIVISION OF TAXATION
 PROPERTY ADMINISTRATION
 APPROVED AS A TAX MAP PURSUANT TO THE AUTHORITY OF
 N.J.A.C. 17:27 & 17:28
 FOR THE DIRECTOR, DIVISION OF TAXATION
James J. Cole C.T.A.
 MANAGER & COLL. CHIEF, LOCAL ASSESSMENT COMPLIANCE
Samuel J. Demas C.T.A.
 BANTO C. DEBROSIO, DISTRICT FIELD REPRESENTATIVE
 DATE: DEC 20 2004 SERIAL NO.: 852

TAX MAP
EAST BRUNSWICK TOWNSHIP
MIDDLESEX COUNTY, NEW JERSEY
 SCALE: 1"= 100' DATE :5-1-2003
JOHN D. BERGLER
 LICENSED LAND SURVEYOR No. 37181
 195 WASHINGTON ROAD
 SAYREVILLE, NEW JERSEY