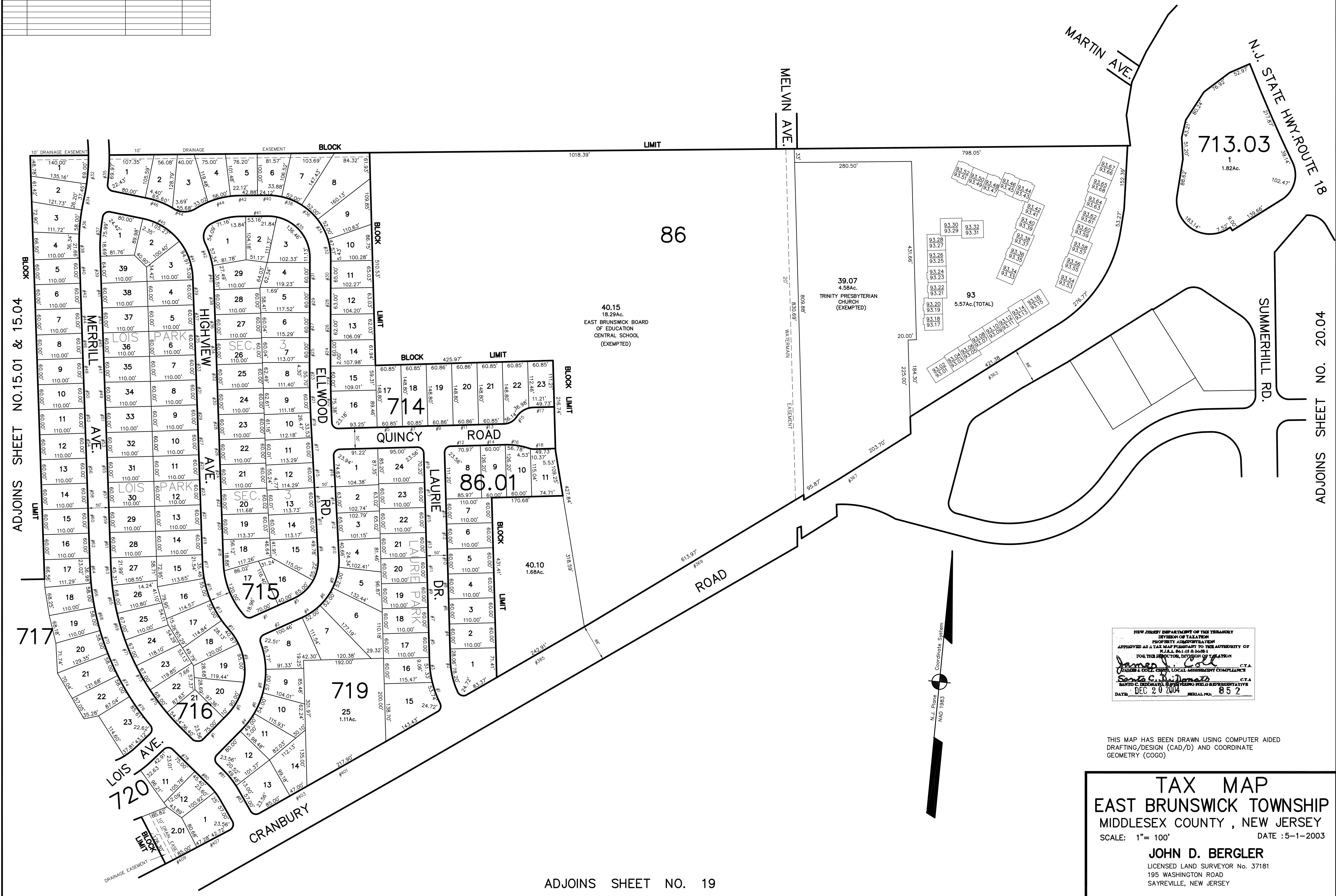


ADJOINS SHEET NO. 15.02

DATE	REVISION	REVISED BY	L.S. NO.
2012	consolid. B720 L2.01	J.D. BERGLER	37181



ADJOINS SHEET NO.15.01 & 15.04

ADJOINS SHEET NO. 20.02

NEW JERSEY DEPARTMENT OF THE TREASURY  
 DIVISION OF TAXATION  
 PROPERTY APPORTIONMENT  
 APPROVED AS A TAX MAP PREPARED TO THE AUTHORITY OF  
 N.J.A.C. 17:27 & 17:28  
 FOR THE DIRECTOR, DIVISION OF TAXATION  
*John D. Bergler* C.T.A.  
 SAID TO COMPLY WITH LOCAL ASSESSMENT COMPLIANCE  
*John D. Bergler* C.T.A.  
 SAID TO INDICATE A PERSON'S FIELD REPRESENTATIVE  
 DATE: DEC 20 2004 SERIAL NO.: 852

THIS MAP HAS BEEN DRAWN USING COMPUTER AIDED  
 DRAFTING/DESIGN (CAD/D) AND COORDINATE  
 GEOMETRY (COGO)

**TAX MAP**  
**EAST BRUNSWICK TOWNSHIP**  
 MIDDLESEX COUNTY, NEW JERSEY  
 SCALE: 1" = 100' DATE: 5-1-2003  
**JOHN D. BERGLER**  
 LICENSED LAND SURVEYOR No. 37181  
 195 WASHINGTON ROAD  
 SAYREVILLE, NEW JERSEY

ADJOINS SHEET NO. 19