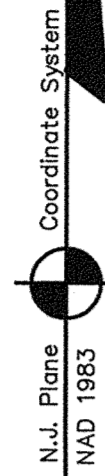


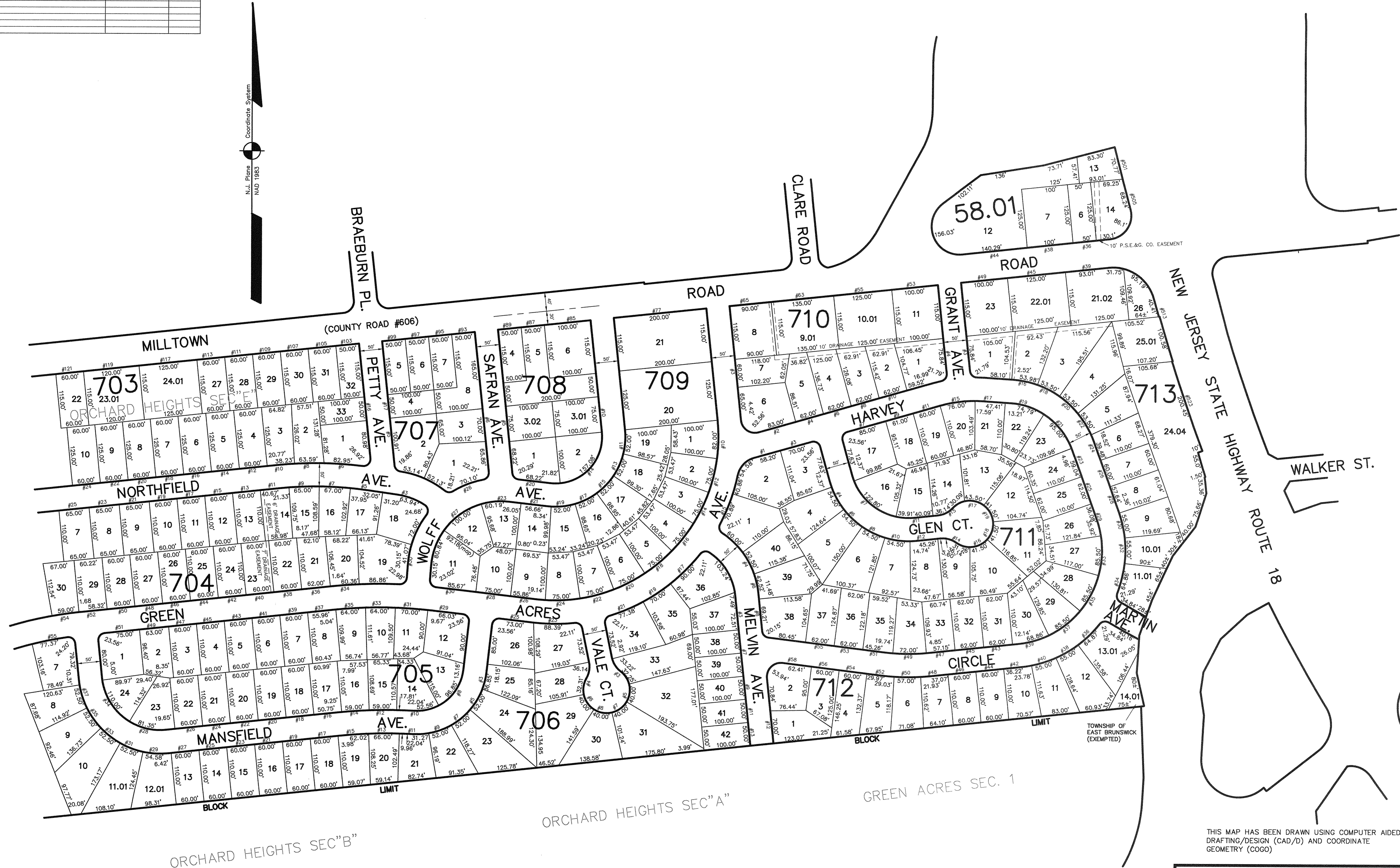
DATE	REVISION	REVISED BY	L.S. NO.
2005	wrong lot # 713/24.04	J.D. BERGLER	37181
2006	wrong lot # 713/22 now 22.01	J.D. BERGLER	37181

ADJOINS SHEET NO. 13.02



ADJOINS SHEET NO. 15.01

ADJOINS SHEET NO. 20.04



THIS MAP HAS BEEN DRAWN USING COMPUTER AIDED DRAFTING/DESIGN (CAD/D) AND COORDINATE GEOMETRY (COGO)

NEW JERSEY DEPARTMENT OF TREASURY  
 DIVISION OF TAXATION  
 PROPERTY ADMINISTRATION  
 APPROVED AS A TAX MAP PURSUANT TO THE AUTHORITY OF N.J.A.C. 17:27 & 17:28  
 FOR THE TOWNSHIP, DIVISION OF TAXATION  
*John D. Bergler*  
 JOHN D. BERGLER  
 SAID COUNTY ENGINEER & FIELD REPRESENTATIVE  
 DATE: DEC 20 2004 SERIAL NO. 852

**TAX MAP**  
**EAST BRUNSWICK TOWNSHIP**  
 MIDDLESEX COUNTY, NEW JERSEY  
 SCALE: 1" = 100' DATE: 5-1-2003  
**JOHN D. BERGLER**  
 LICENSED LAND SURVEYOR No. 37181  
 195 WASHINGTON ROAD  
 SAYREVILLE, NEW JERSEY

ADJOINS SHEET NO. 15.03