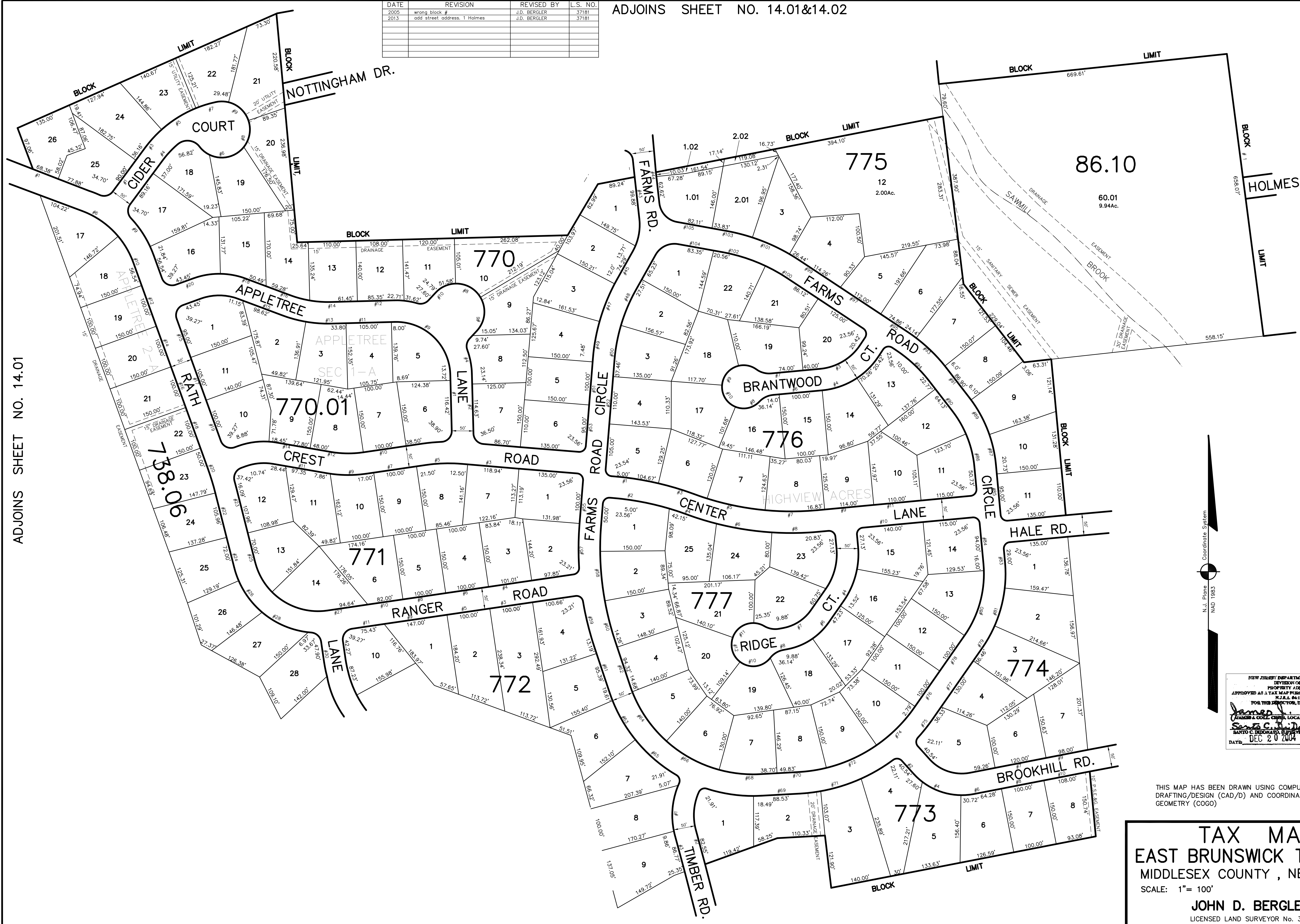


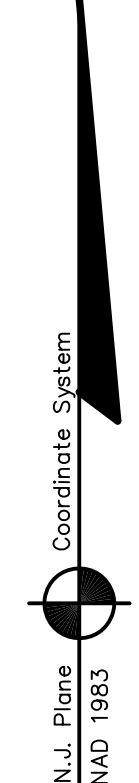
DATE	REVISION	REVISED BY	L.S. NO.
2005	wrong block #	J.D. BERGLER	37181
2013	add street address, 1 Holmes	J.D. BERGLER	37181

ADJOINS SHEET NO. 14.01&14.02



ADJOINS SHEET NO. 14.01

ADJOINS SHEET NO. 15.01&15.04



NEW JERSEY DEPARTMENT OF THE TREASURY  
DIVISION OF TAXATION  
PROPERTY ADMINISTRATION  
APPROVED AS A TAX MAP PRESENTED TO THE AUTHORITY OF  
T.J.A.A. RULES 6:27-1  
FOR THE DIRECTOR, DIVISION OF TAXATION  
*James J. Cole* C.T.A.  
KARIM A. COLE, CHIEF, LOCAL ASSESSMENT COMPLIANCE  
*Scott C. D'Amico* C.T.A.  
BANTO C. BROCKWAY, REGIONAL FIELD REPRESENTATIVE  
DATE: DEC 20 2014 SERIAL NO.: 852

THIS MAP HAS BEEN DRAWN USING COMPUTER AIDED  
DRAFTING/DESIGN (CAD/D) AND COORDINATE  
GEOMETRY (COGO)

**TAX MAP**  
EAST BRUNSWICK TOWNSHIP  
MIDDLESEX COUNTY, NEW JERSEY  
SCALE: 1"= 100' DATE :5-1-2003  
**JOHN D. BERGLER**  
LICENSED LAND SURVEYOR No. 37181  
195 WASHINGTON ROAD  
SAYREVILLE, NEW JERSEY

ADJOINS SHEET NO. 16.02&16.03