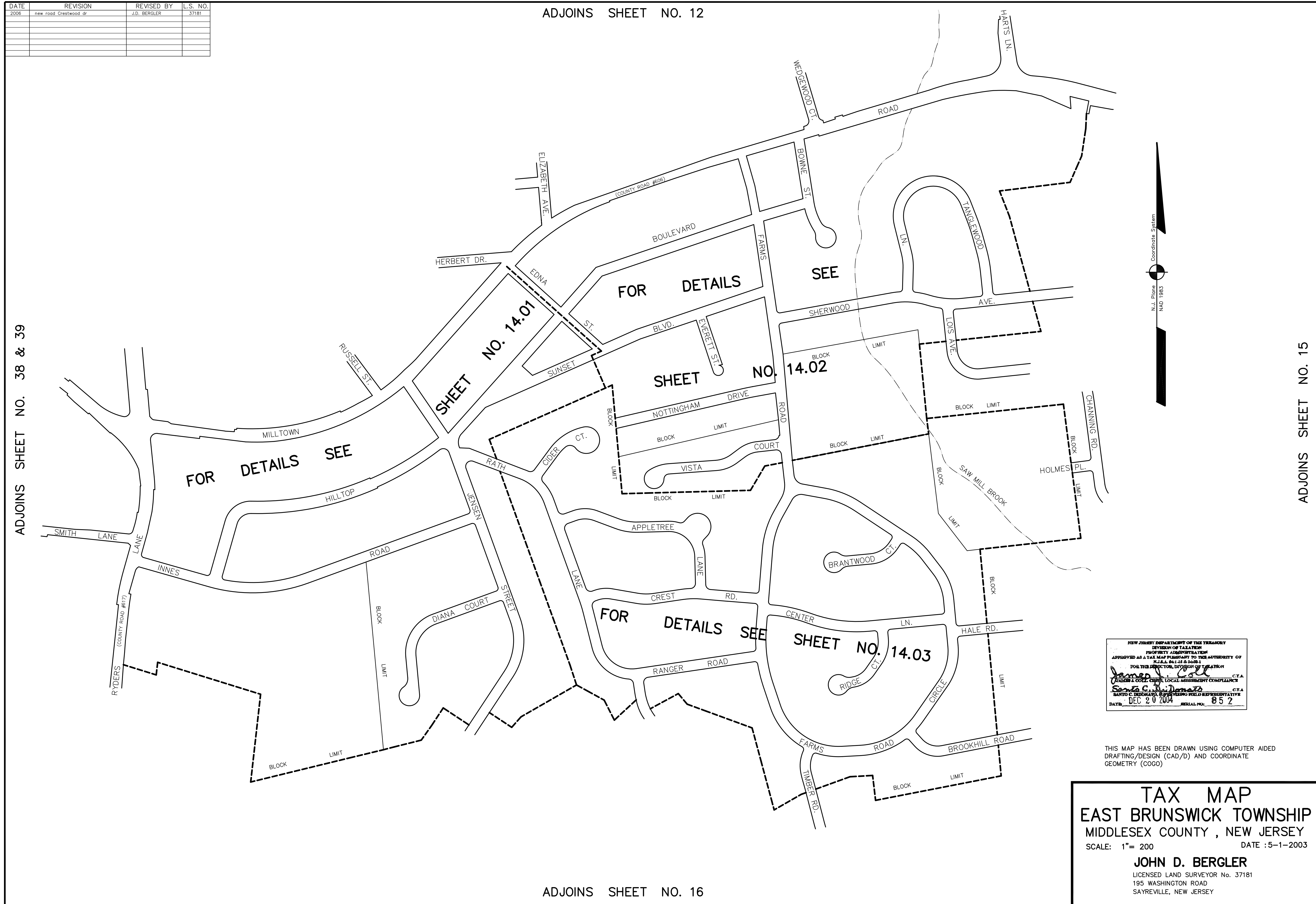


DATE	REVISION	REVISED BY	L.S. NO.
2006	new road Crestwood dr	J.D. BERGLER	37181

ADJOINS SHEET NO. 12

ADJOINS SHEET NO. 38 & 39

ADJOINS SHEET NO. 15



NEW JERSEY DEPARTMENT OF THE TREASURY  
 DIVISION OF TAXATION  
 PROPERTY ASSOCIATION  
 APPROVED AS A TAX MAP PRESENTED TO THE AUTHORITY OF  
 N.J.S.A. 54:27 & 54:28  
 FOR THE DIRECTOR, DIVISION OF TAXATION  
*James J. Coll* C.T.A.  
 TREASURER & CHIEF, LOCAL ASSESSMENT COMPLIANCE  
*Sam C. DiDomenico* C.T.A.  
 DATE: DEC 20 2004 SERIAL NO: 852

THIS MAP HAS BEEN DRAWN USING COMPUTER AIDED DRAFTING/DESIGN (CAD/D) AND COORDINATE GEOMETRY (COGO)

**TAX MAP**  
**EAST BRUNSWICK TOWNSHIP**  
 MIDDLESEX COUNTY, NEW JERSEY  
 SCALE: 1"= 200 DATE :5-1-2003  
**JOHN D. BERGLER**  
 LICENSED LAND SURVEYOR No. 37181  
 195 WASHINGTON ROAD  
 SAYREVILLE, NEW JERSEY

ADJOINS SHEET NO. 16