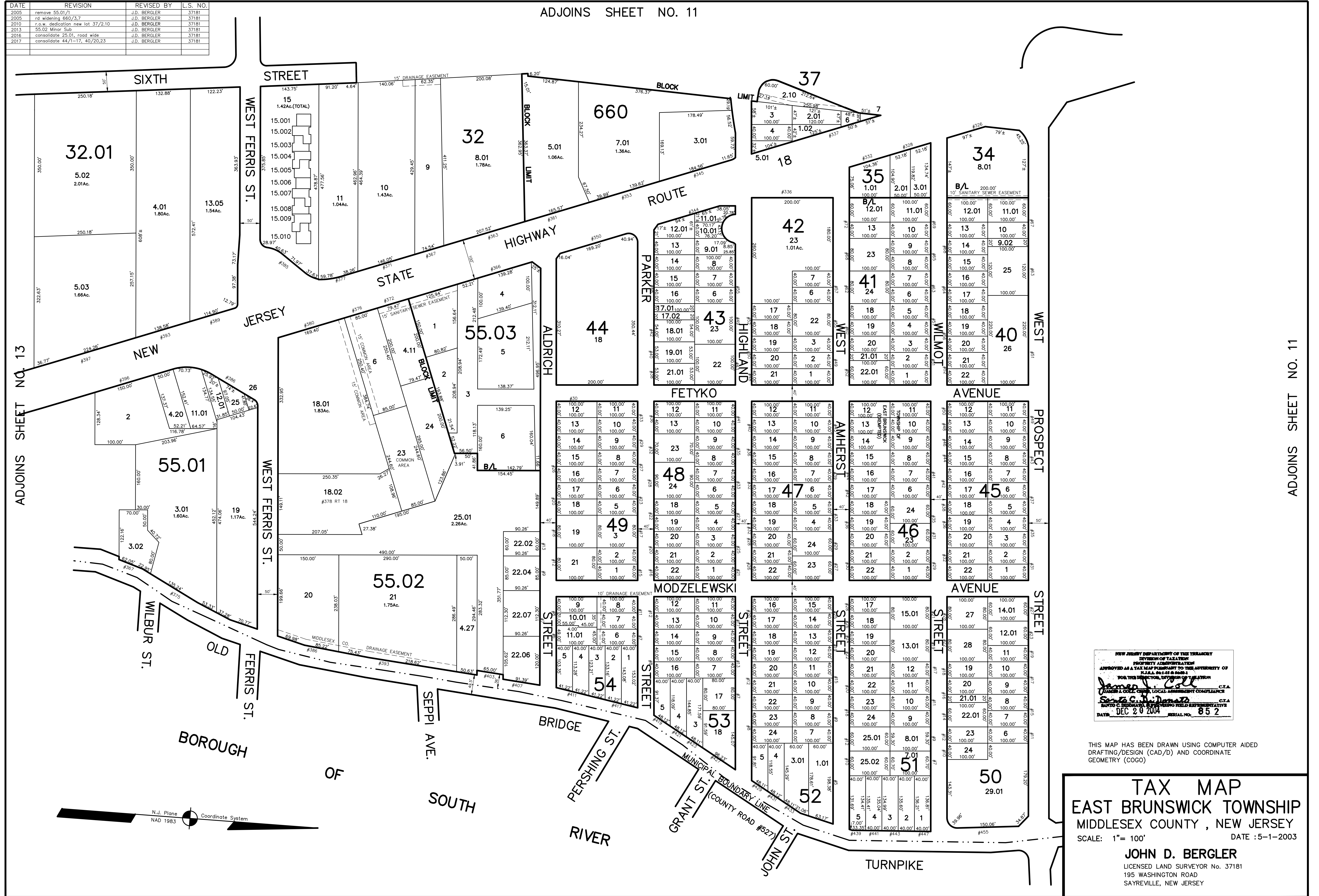


ADJOINS SHEET NO. 11

DATE	REVISION	REVISED BY	L.S. NO.
2005	remove 55.01/1	J.D. BERGLER	37181
2005	rd widening 660/3,7	J.D. BERGLER	37181
2010	r.o.w. dedication new lot 37/2,10	J.D. BERGLER	37181
2013	55.02 Minor Sub	J.D. BERGLER	37181
2016	consolidate 25.01, road wide	J.D. BERGLER	37181
2017	consolidate 44/1-17, 40/20,23	J.D. BERGLER	37181



NEW JERSEY DEPARTMENT OF THE TREASURY
 DIVISION OF TAXATION
 APPROVED AS A TAX MAP PURSUANT TO THE AUTHORITY OF
 P.L.R.A. 96-141 § 6 AND
 FOR THE DIRECTOR, DIVISION OF TAXATION
James J. [Signature] C.T.A.
James C. [Signature] C.T.A.
 DATE: DEC 20 2004 SERIAL NO. 852

THIS MAP HAS BEEN DRAWN USING COMPUTER AIDED
 DRAFTING/DESIGN (CAD/D) AND COORDINATE
 GEOMETRY (COGO)

TAX MAP
EAST BRUNSWICK TOWNSHIP
MIDDLESEX COUNTY, NEW JERSEY
 SCALE: 1" = 100' DATE: 5-1-2003

JOHN D. BERGLER
 LICENSED LAND SURVEYOR No. 37181
 195 WASHINGTON ROAD
 SAYREVILLE, NEW JERSEY