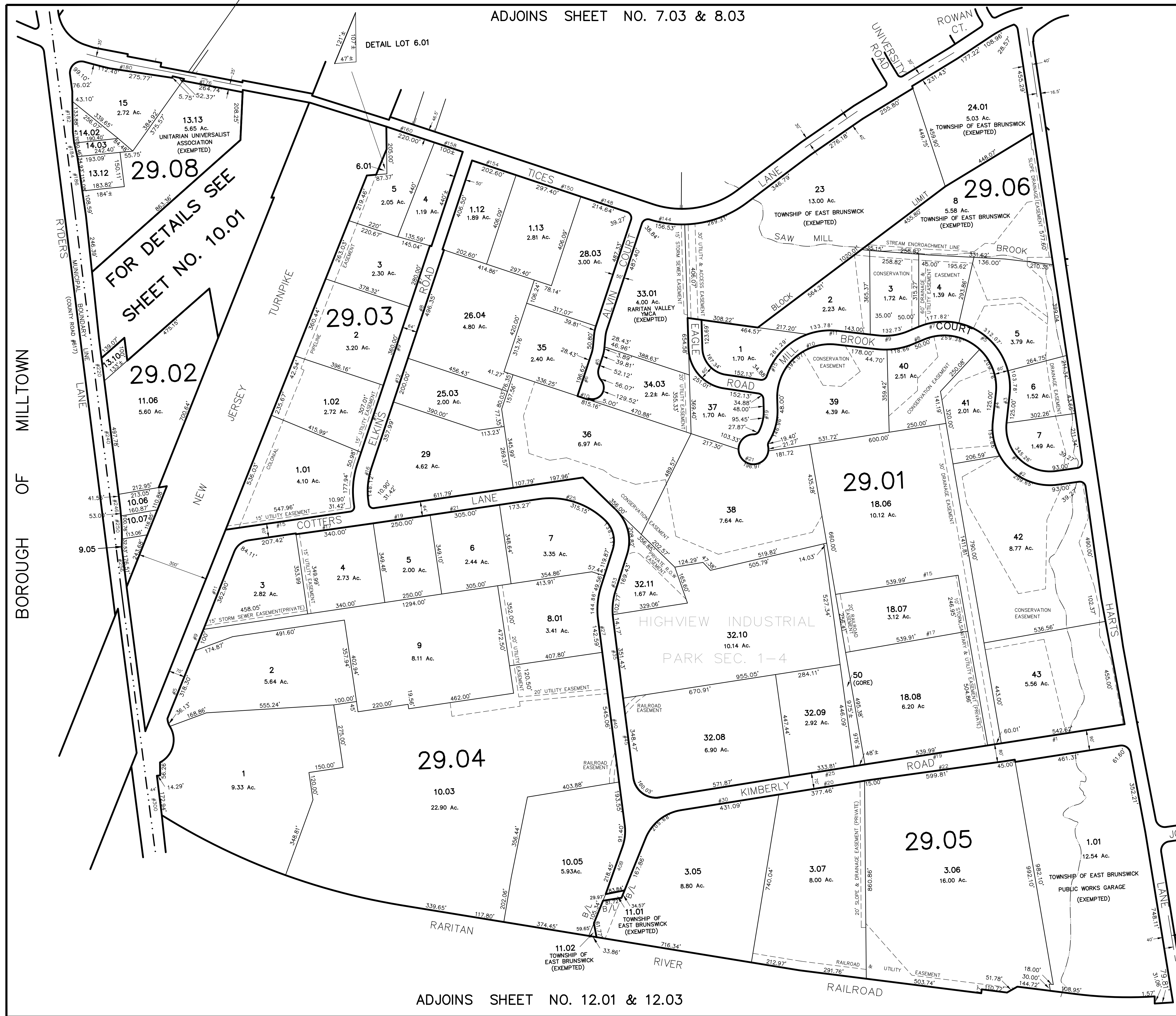


ADJOINS SHEET NO. 7.03 & 8.03

DATE	REVISION	REVISED BY	L.S. NO.
2005	add missing lot #	J.D. BERGLER	37181
2016	add street #'s	J.D. BERGLER	37181



FOR DETAILS SEE
SHEET NO. 10.01

N.J. Plane
NAD 1983
Coordinate System

NEW JERSEY DEPARTMENT OF THE TREASURY
DIVISION OF TAXATION
PROPERTY ADMINISTRATION
APPROVED AS A TAX MAP PURSUANT TO THE AUTHORITY OF
N.J.A.C. 17:27 & 17:28
FOR THE DIRECTOR, DIVISION OF TAXATION
James J. Cole C.T.A.
Scott C. Demas C.T.A.
DATE: DEC 20 2004 SERIAL NO. 852

THIS MAP HAS BEEN DRAWN USING COMPUTER AIDED
DRAFTING/DESIGN (CAD/D) AND COORDINATE
GEOMETRY (COGO)

TAX MAP
EAST BRUNSWICK TOWNSHIP
MIDDLESEX COUNTY, NEW JERSEY
SCALE: 1" = 200' DATE: 5-1-2003
JOHN D. BERGLER
LICENSED LAND SURVEYOR No. 37181
195 WASHINGTON ROAD
SAYREVILLE, NEW JERSEY

ADJOINS SHEET NO. 12.01 & 12.03

ADJOINS SHEET NO. 11 & 13