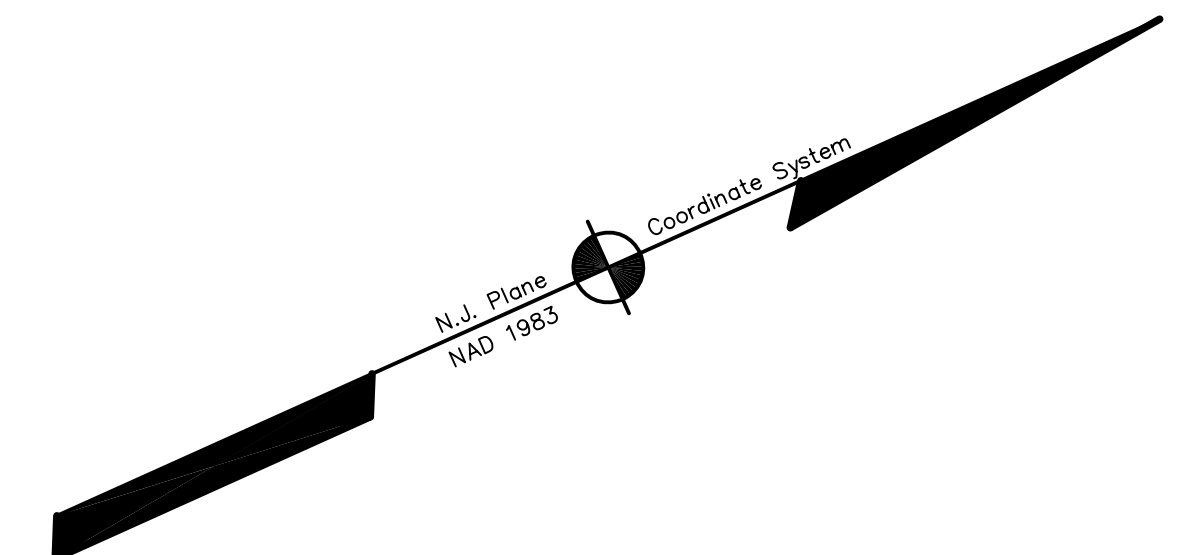


DATE	REVISION	REVISED BY	L.S. NO.
2005	add subdivision names	J.D. BERGLER	37181

ADJOINS SHEET NO. 7



NEW JERSEY DEPARTMENT OF THE TREASURY  
 DIVISION OF TAXATION  
 PROPERTY ADVERTISEMENT  
 APPROVED AS A TAX MAP PURSUANT TO THE AUTHORITY OF  
 N.J.S.A. 54:11 & 54:12  
 FOR THE DIRECTOR, DIVISION OF TAXATION  
*John D. Bergler* C.T.A.  
*Scott C. Demaree* C.T.A.  
 DATE: DEC 20 2004 SERIAL NO. 852

THIS MAP HAS BEEN DRAWN USING COMPUTER AIDED  
 DRAFTING/DESIGN (CAD/D) AND COORDINATE  
 GEOMETRY (COGO)

**TAX MAP**  
**EAST BRUNSWICK TOWNSHIP**  
 MIDDLESEX COUNTY, NEW JERSEY  
 SCALE: 1" = 100' DATE: 5-1-2003  
**JOHN D. BERGLER**  
 LICENSED LAND SURVEYOR No. 37181  
 195 WASHINGTON ROAD  
 SAYREVILLE, NEW JERSEY

ADJOINS SHEET NO. 10

ADJOINS SHEET NO. 8.03

ADJOINS SHEET NO. 7.01&7.02