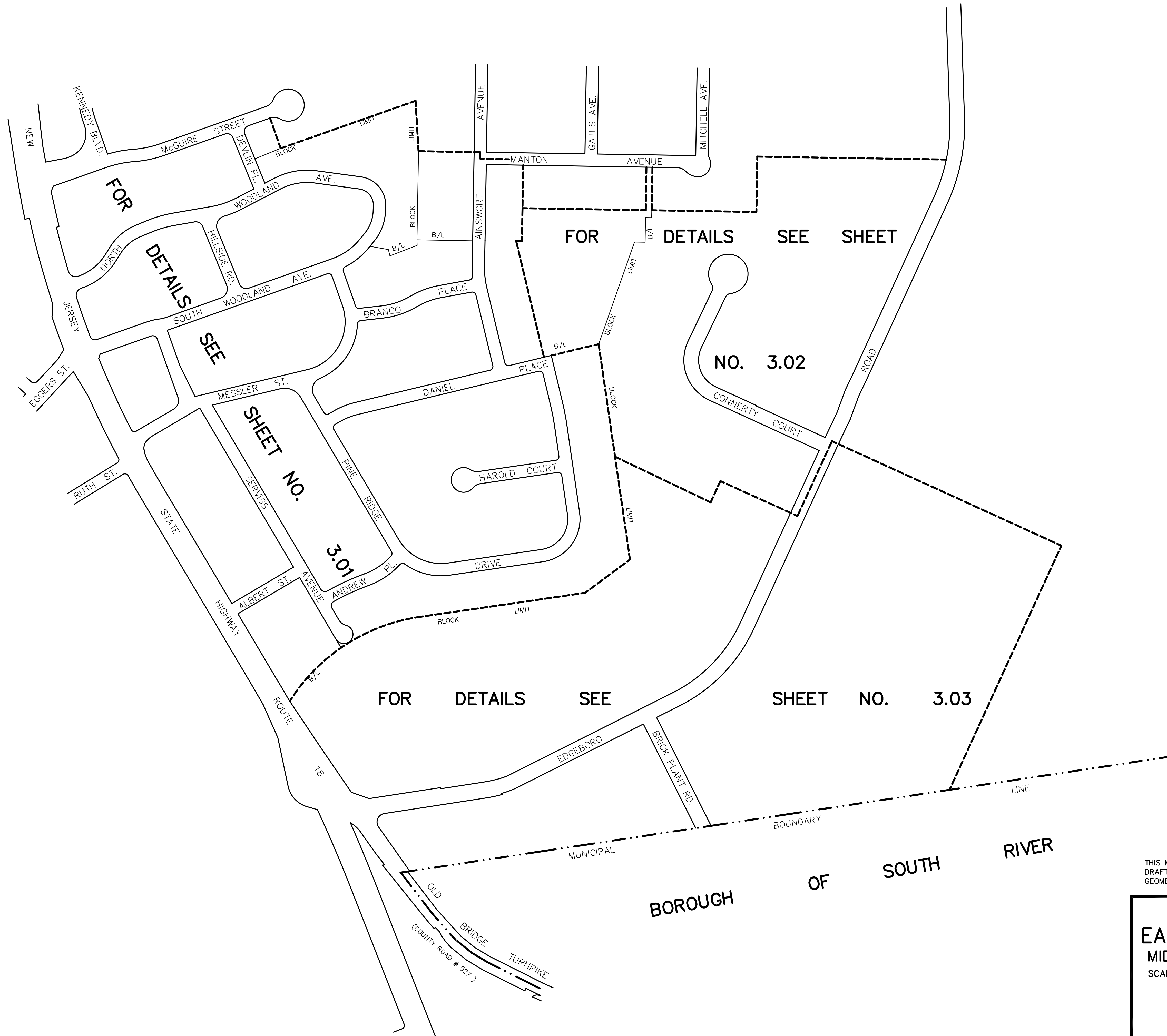


ADJOINS SHEET NO. 2

ADJOINS SHEET NO. 8.01

ADJOINS SHEET NO. 6



NEW JERSEY DEPARTMENT OF THE TREASURY
 DIVISION OF TAXATION
 PROPERTY ADJUSTMENT TEAM
 APPROVED AS A TAX MAP PRESENT TO THE AUTHORITY OF
 P.L.R. 04-118-01
 FOR THE DIRECTOR, DIVISION OF TAXATION
James J. Coll C.T.A.
 TAXES & COLL. GEN. LOCAL ASSESSMENT COMPLIANCE
Santo C. DiDona C.T.A.
 SANTO C. DIDONA, REPRESENTING FIELD REPRESENTATIVE
 DATE: DEC 20 2004 SERIAL NO.: 852

THIS MAP HAS BEEN DRAWN USING COMPUTER AIDED
 DRAFTING/DESIGN (CAD/D) AND COORDINATE
 GEOMETRY (COGO)

TAX MAP
EAST BRUNSWICK TOWNSHIP
 MIDDLESEX COUNTY, NEW JERSEY
 SCALE: 1" = 200' DATE: 5-1-2003

JOHN D. BERGLER
 LICENSED LAND SURVEYOR No. 37181
 195 WASHINGTON ROAD
 SAYREVILLE, NEW JERSEY