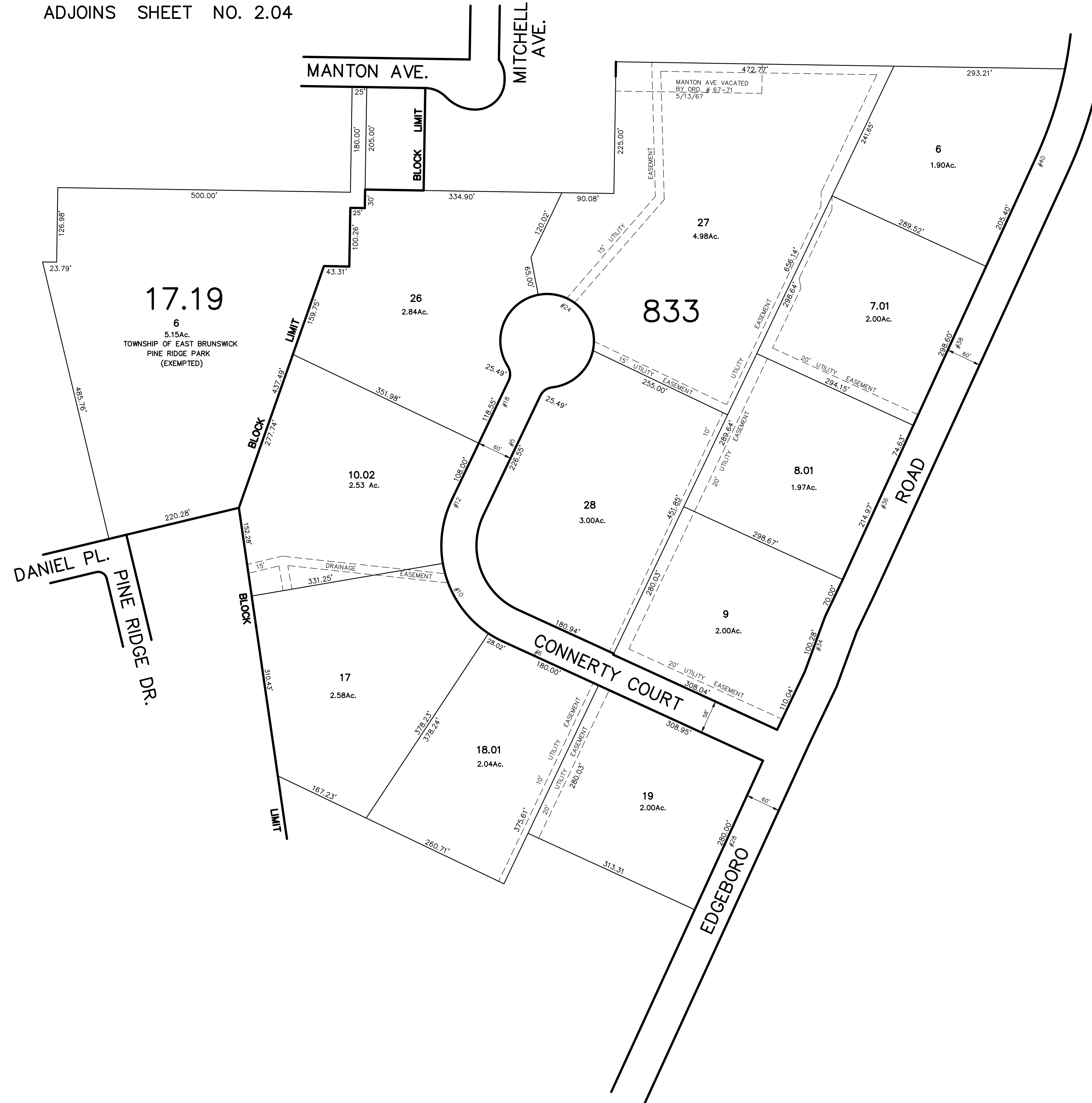


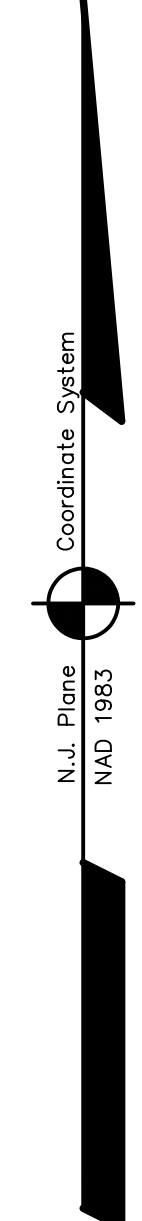
DATE	REVISION	REVISED BY	L.S. NO.
2016	water main eas	J.D. Bergler	37181

ADJOINS SHEET NO. 2.04



ADJOINS SHEET NO. 3.01

ADJOINS SHEET NO. 6



NEW JERSEY DEPARTMENT OF THE TREASURY  
 DIVISION OF TAXATION  
 PROPERTY ADJUSTMENT  
 APPROVED AS A TAX MAP PURSUANT TO THE AUTHORITY OF  
 N.J.S.A. 52:27-10 & 11  
 FOR THE DIRECTOR, DIVISION OF TAXATION  
*James J. Cole* C.T.A.  
 JAMES A. COLE, CHIEF, LOCAL ASSESSMENT COMPLIANCE  
*Samuel J. Demas* C.T.A.  
 SAMUEL J. DEMAS, FIELD REPRESENTATIVE  
 DATE: DEC 20 2004 SERIAL NO. 852

THIS MAP HAS BEEN DRAWN USING COMPUTER AIDED  
 DRAFTING/DESIGN (CAD/D) AND COORDINATE  
 GEOMETRY (COGO)

**TAX MAP**  
**EAST BRUNSWICK TOWNSHIP**  
 MIDDLESEX COUNTY, NEW JERSEY  
 SCALE: 1" = 100' DATE :5-1-2003  
**JOHN D. BERGLER**  
 LICENSED LAND SURVEYOR No. 37181  
 195 WASHINGTON ROAD  
 SAYREVILLE, NEW JERSEY

ADJOINS SHEET NO. 3.03