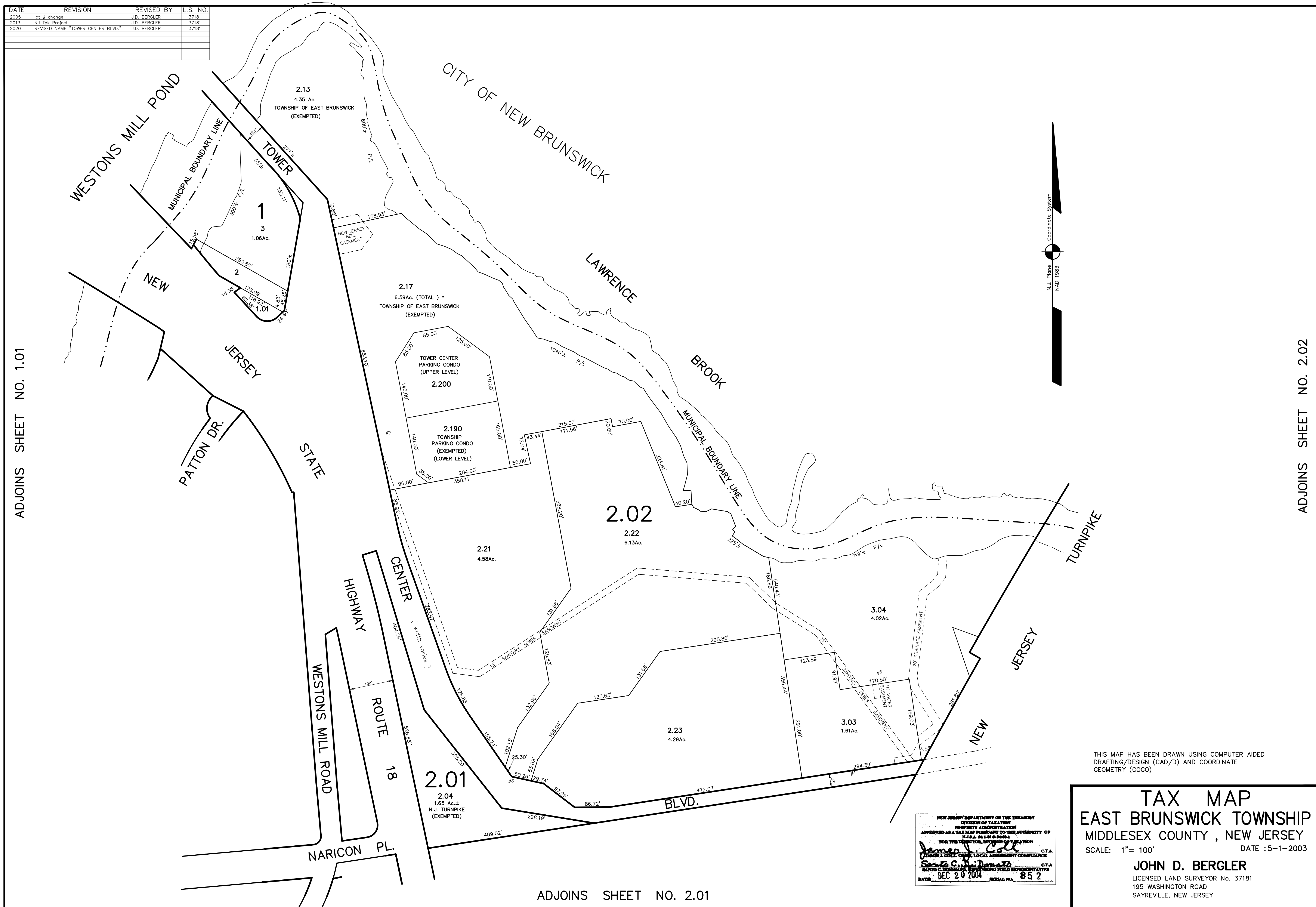


DATE	REVISION	REVISED BY	L.S. NO.
2005	lot # change	J.D. BERGLER	37181
2013	NJ Tpk Project	J.D. BERGLER	37181
2020	REVISED NAME "TOWER CENTER BLVD."	J.D. BERGLER	37181



ADJOINS SHEET NO. 1.01

ADJOINS SHEET NO. 2.02

ADJOINS SHEET NO. 2.01

THIS MAP HAS BEEN DRAWN USING COMPUTER AIDED
 DRAFTING/DESIGN (CAD/D) AND COORDINATE
 GEOMETRY (COGO)

NEW JERSEY DEPARTMENT OF THE TREASURY
 DIVISION OF TAXATION
 PROPERTY ADMINISTRATION
 APPROVED AS A TAX MAP PURSUANT TO THE AUTHORITY OF
 N.J.A.C. 17:27 AND 17:28
 FOR THE TOWNSHIP OF EAST BRUNSWICK
 MIDDLESEX COUNTY, NEW JERSEY
 DATE: DEC 20 2004 SERIAL NO. 852

TAX MAP
EAST BRUNSWICK TOWNSHIP
MIDDLESEX COUNTY, NEW JERSEY
 SCALE: 1" = 100' DATE: 5-1-2003
JOHN D. BERGLER
 LICENSED LAND SURVEYOR No. 37181
 195 WASHINGTON ROAD
 SAYREVILLE, NEW JERSEY