

**SYMBOL LEGEND**

①	TRAFFIC SIGNAL HEAD ID
Ⓐ	SIGNAL POLE FOUNDATION ID
Ⓐ	IMAGE DETECTOR ID
▶	TRAFFIC SIGNAL HEAD
▶	PEDESTRIAN SIGNAL HEAD
⊥	PEDESTRIAN PUSH BUTTON
■	SPF FOUNDATION
■	SFT/SFK FOUNDATION
■	STF FOUNDATION
■	IMAGE DETECTOR

**NOTES:**

- ALL TRAFFIC CONTROL DEVICES SHALL BE IN CONFORMANCE WITH THE CURRENT MANUAL ON UNIFORM TRAFFIC CONTROL DEVICES.
- MOUNTING HEIGHTS
  - HEADS 10 AND 14 TO BE MOUNTED AT A HEIGHT OF 12'
  - HEADS 15 THRU 20 TO BE MOUNTED AT A HEIGHT OF 8'
  - ALL OTHER SIGNAL HEADS TO BE MOUNTED AT A MINIMUM HEIGHT OF 15'6"
  - ALL INDICATIONS TO BE L.E.D.
- PUSH BUTTONS TO BE LOCATED 4'0" ABOVE FINISHED SURFACE OF SIDEWALK AND ARE TO PROVIDE SPEECH WALK MESSAGE WHEN ACTIVATED.

**SIGNAL LEGEND(N.T.S.)**

PPB 14" 5.5"	12" 12" 12" 3,7,8, 11,12 L.E.D.	12" 12" 12" 1,2,4,5 L.E.D.	12" 12" 12" 6,9,10,13,14 L.E.D.	18" 16" 15-20 L.E.D.
--------------------	--	--	---	-------------------------------

**PAVEMENT MARKING LEGEND**

UNLESS OTHERWISE SHOWN, PAVEMENT MARKINGS SHALL CONFORM TO THE FOLLOWING:

STOP LINE	-24" WIDE WHITE LINE
CENTER LINE	-2-4" WIDE YELLOW LINES
DASHED LANE LINE	-4" WIDE WHITE LINE, 10' LONG AT 30' INTERVALS
LANE EXTENSION GUIDE LANES	-4" WIDE WHITE LINE, 2' LONG AT 4' INTERVALS
SOLID LANE LINE-EXCLUSIVE MOVEMENT	-8" WIDE WHITE LINE
SOLID LANE LINE- ALL OTHERS	-4" WIDE WHITE LINE
CROSSWALK LINES	-8" WIDE WHITE LINES
MEDIAN CROSS HATCH LINES	-24" WIDE YELLOW LINES AT 45° SPACED 12' O.C.
GORE CROSS HATCH LINES	-24" WIDE WHITE LINES AT 45° SPACED 12' O.C.
ISLAND CHANNELIZATION LINE	-8" WIDE WHITE LINE
RIGHT SHOULDER LINE	-4" WIDE WHITE LINE
LEFT SHOULDER LINE	-4" WIDE YELLOW LINE

**NOTES:**

- ALL TRAFFIC CONTROL DEVICES SHALL CONFORM TO THE CURRENT MANUAL ON UNIFORM TRAFFIC CONTROL DEVICES
- NEAREST CROSSWALK LINE IS TO BE LOCATED A MINIMUM OF 4' FROM STOP LINE.
- EXISTING STRIPING THAT DOES NOT CONFORM TO THIS PLAN SHALL BE REMOVED BY THE GRINDING METHOD.
- ALL CONFLICTING SIGNS, TREES AND OTHER OBSTRUCTIONS SHALL BE REMOVED AS PART OF THIS CONSTRUCTION.
- W = WHITE STRIPE  
Y = YELLOW STRIPE

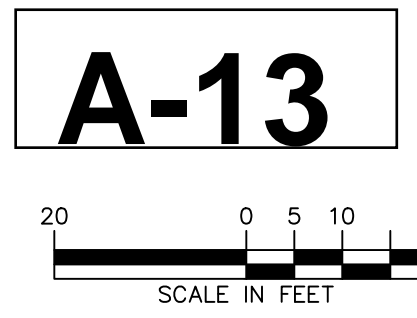
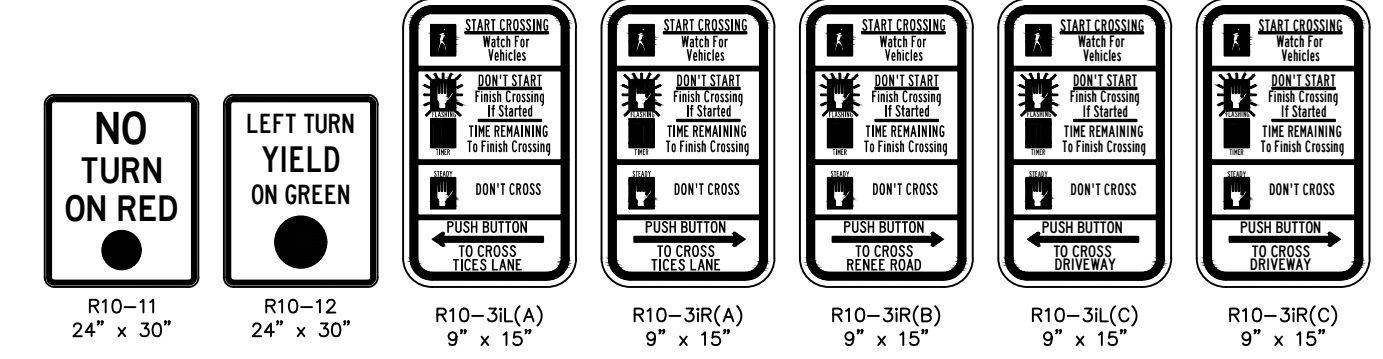
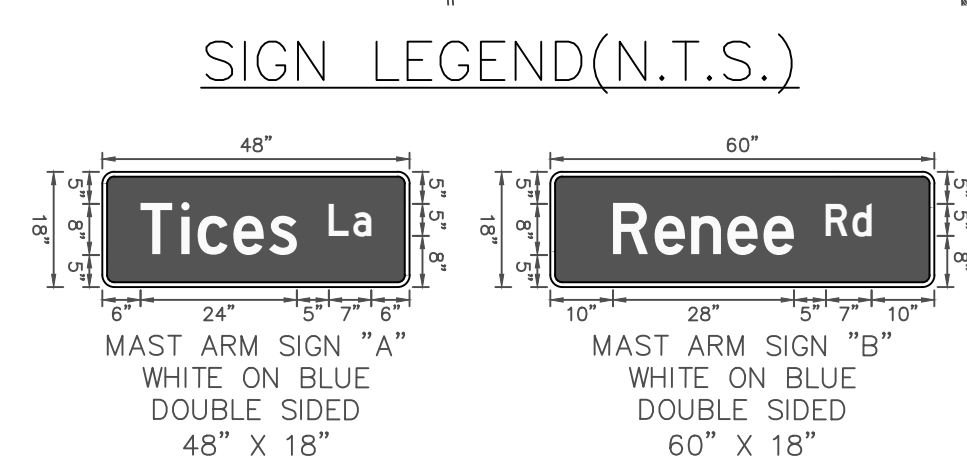
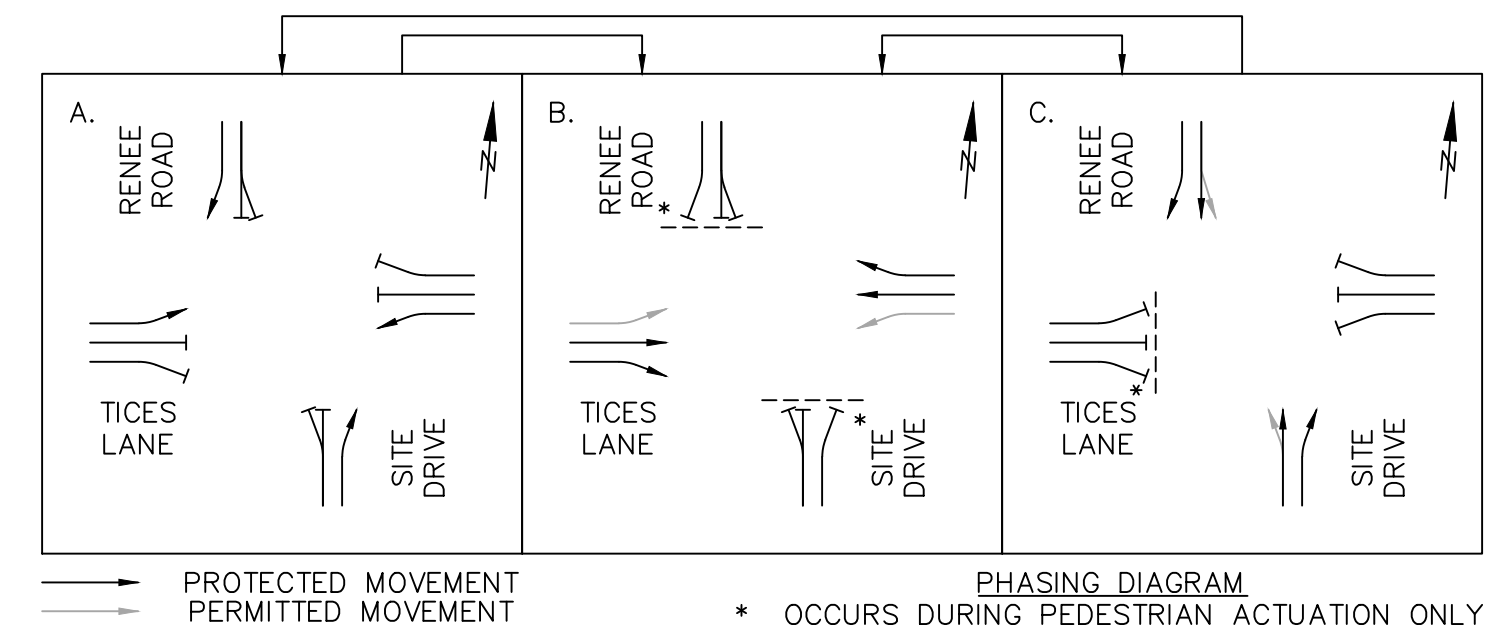
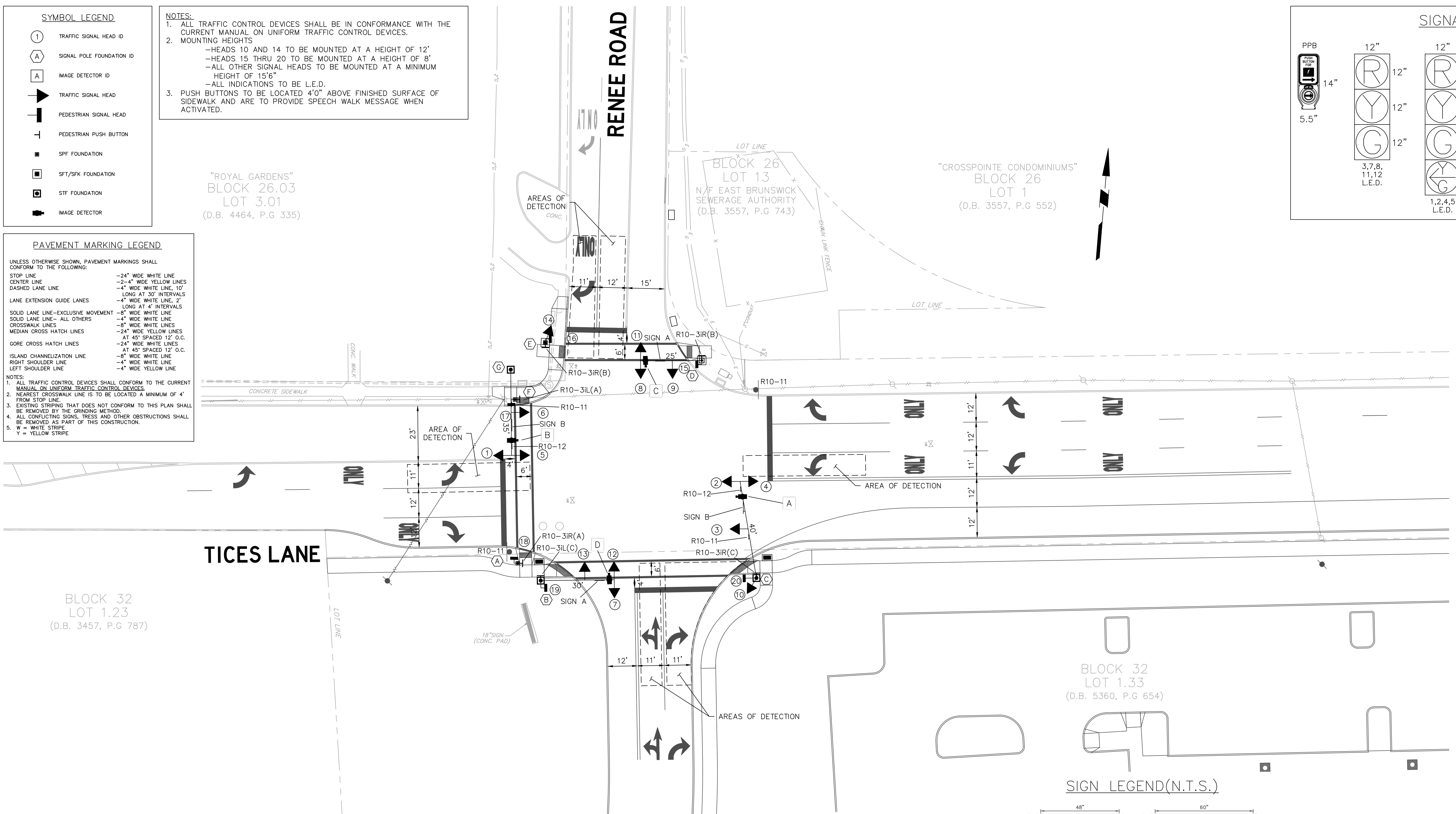
"ROYAL GARDENS"  
BLOCK 26.03  
LOT 3.01  
(D.B. 4464, P.G 335)

BLOCK 26  
LOT 13  
N/F EAST BRUNSWICK  
SEWERAGE AUTHORITY  
(D.B. 3557, P.G 743)

"CROSSPOINTE CONDOMINIUMS"  
BLOCK 26  
LOT 1  
(D.B. 3557, P.G 552)

BLOCK 32  
LOT 1.23  
(D.B. 3457, P.G 787)

BLOCK 32  
LOT 1.33  
(D.B. 5360, P.G 654)



Date	Description	No.
REVISIONS		

**NOT FOR BID OR CONSTRUCTION**

SIGNATURE: KARL A. PEHNKE  
PROFESSIONAL ENGINEER  
STATE LIC. No. GE36434

**LANGAN**  
Langan Engineering, Environmental, Surveying,  
Landscape Architecture and Geology, D.P.C.  
989 Lenox Drive, Suite 124  
Lawrenceville, NJ 08648

T: 609.282.8000 F: 609.282.8001 www.langan.com  
NJ CERTIFICATE OF AUTHORIZATION No. 24GA27996400

Project  
**TICES LANE IMPROVEMENTS**  
TOWNSHIP OF EAST BRUNSWICK  
MIDDLESEX COUNTY NEW JERSEY

Drawing Title  
**TRAFFIC SIGNAL PLAN**

Project No. 130096501	Drawing No. KT107
Date 1/8/2020	Sheet 3 of 4
Scale 1" = 20'	0101
Drawn By ME	Checked By KP
Submission Date 1/8/2020	