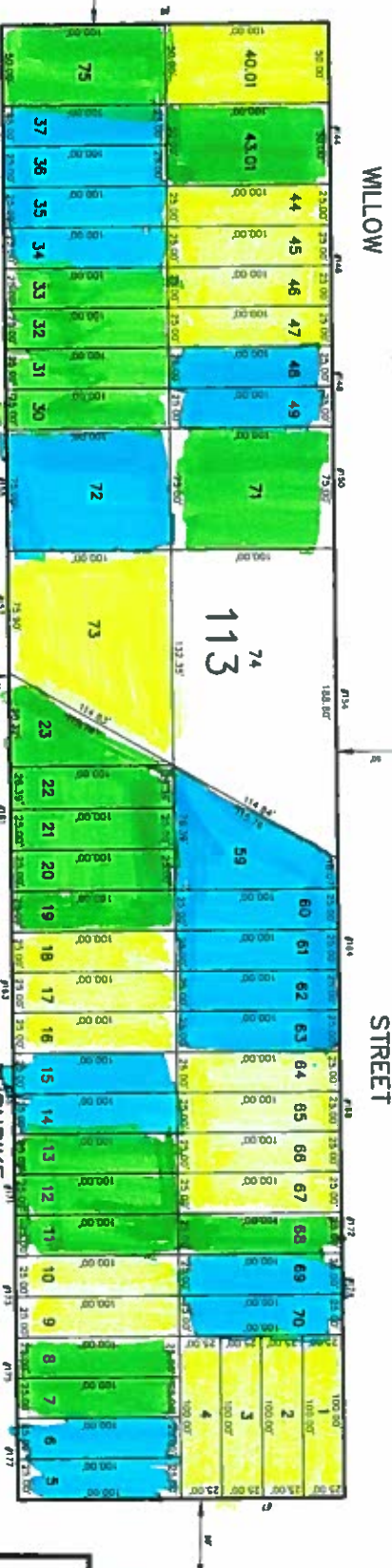
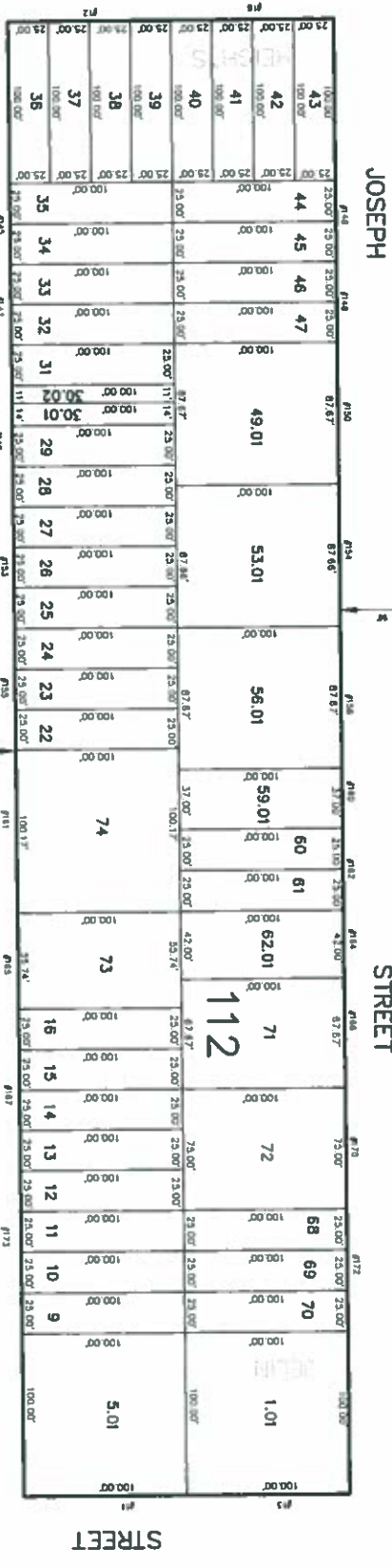
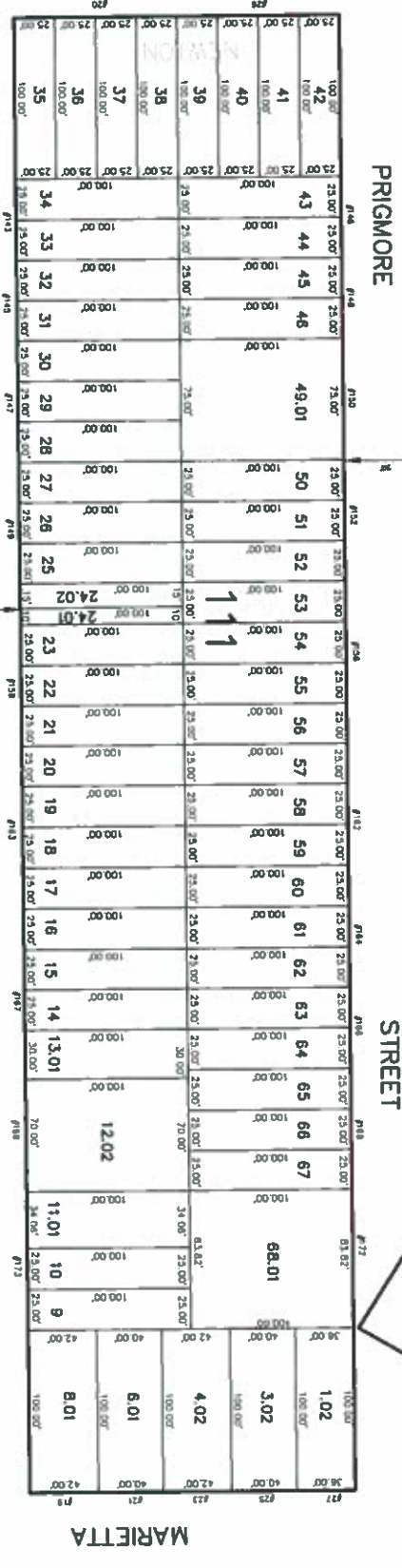
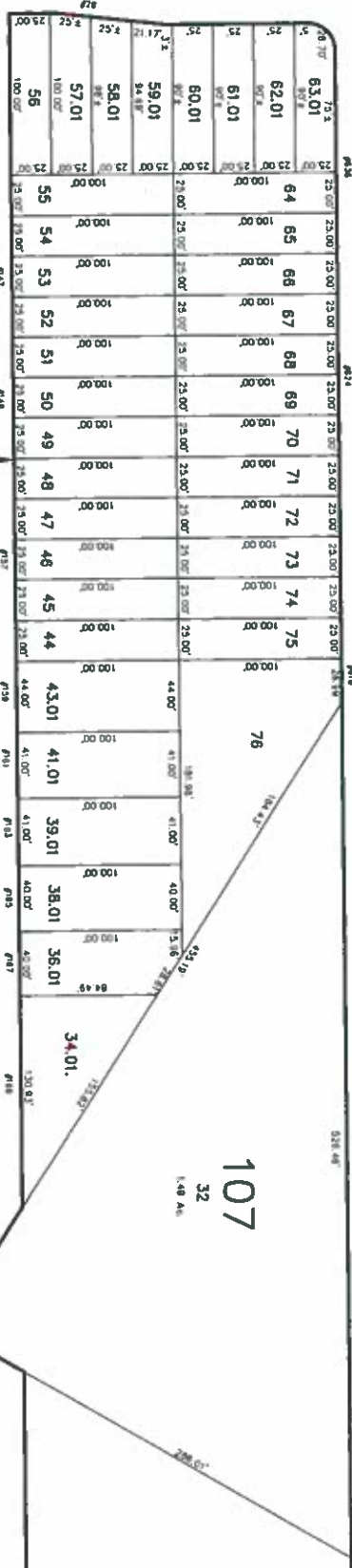
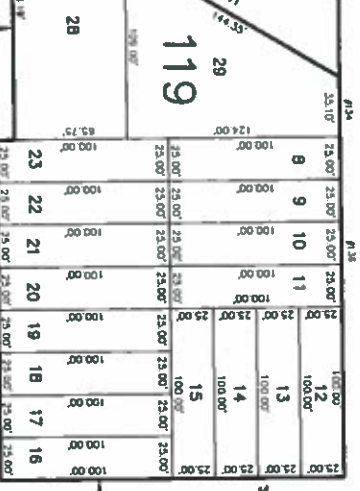
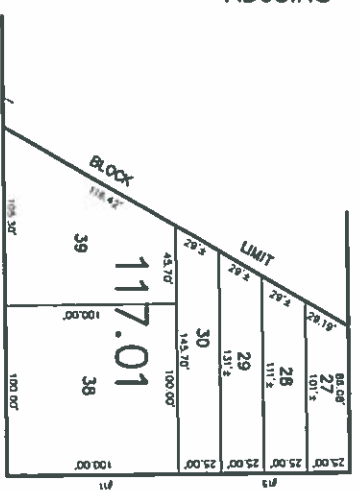
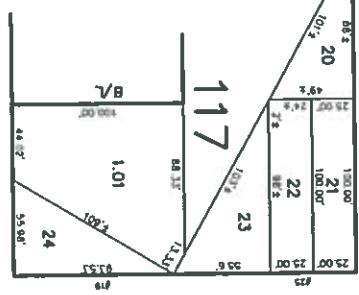
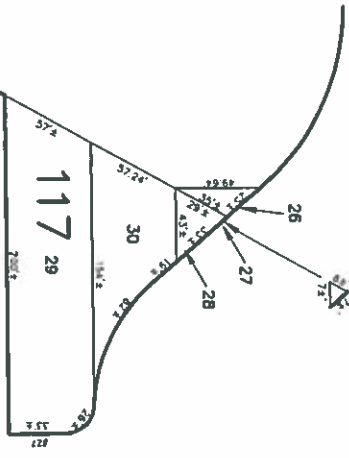


DATE	REVISION	REVISED BY	L.S. NO.
2002	101 (ORIGINATOR'S) 8.111 L-27-28	J.B. BERGLER	3118

NEW JERSEY STATE HIGHWAY ROUTE 18 ADJOINS SHEET NO. 20.05

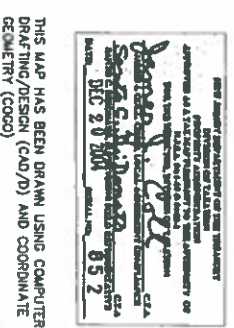
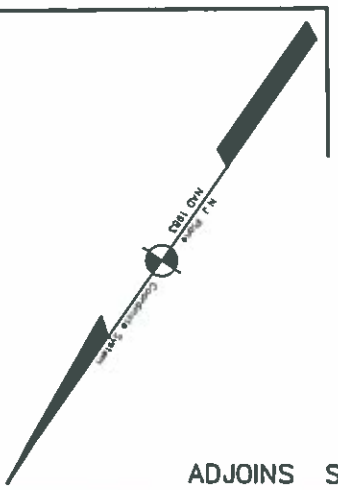
ADJOINS SHEET NO. 20.01

DETAIL LOT 27



10 lots with  
10,000sf or more  
4 lots with  
7,500 sf  
9 lots with  
5,000 sf

ADJOINS SHEET NO. 20.03



THIS MAP HAS BEEN DRAWN USING COMPUTER AIDED DRAFTING/DESIGN (CAD/D) AND COORDINATE GEOMETRY (COGO)

**TAX MAP**

**EAST BRUNSWICK TOWNSHIP**  
MIDDLESEX COUNTY, NEW JERSEY  
SCALE: 1" = 50'  
DATE: 5-1-2003

**JOHN D. BERGLER**  
LICENSED LAND SURVEYOR NO. 37181  
195 WASHINGTON ROAD  
SAREVILLE, NEW JERSEY

TICE AVE. KAMM AVE. BOROUGH OF MORNINGSIDE AVE. CLEARMONT AVE. SOUTH RIVER LEXINGTON AVE.