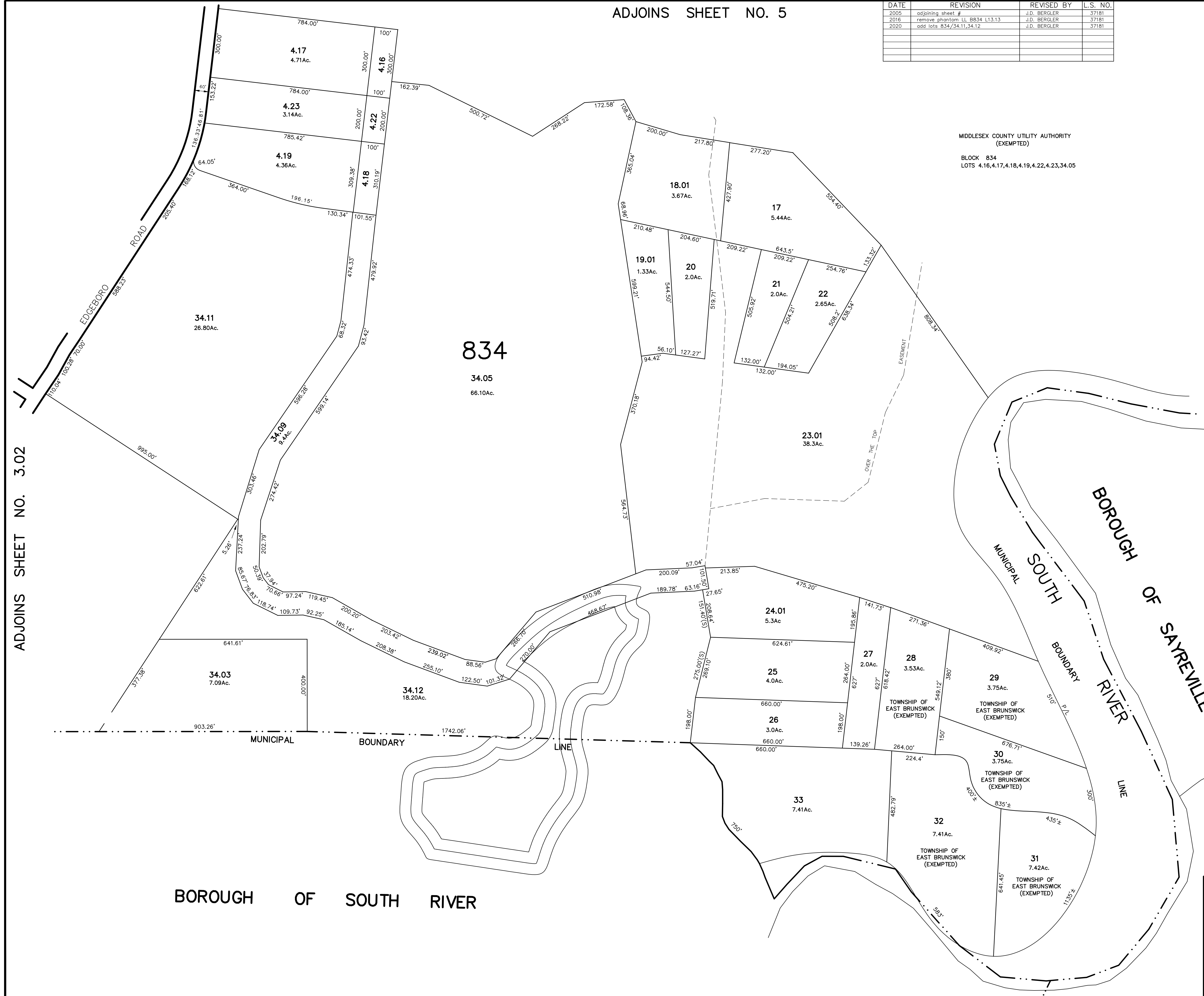
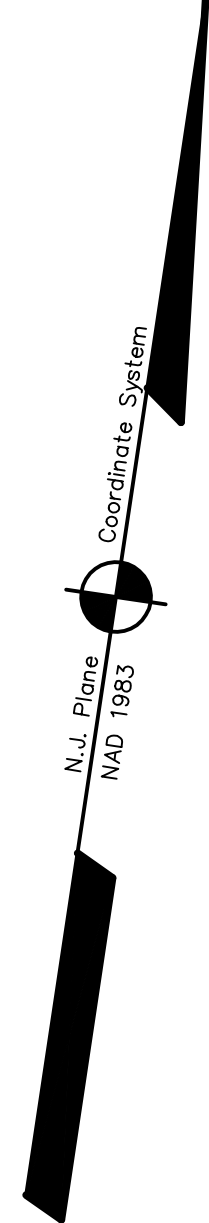


ADJOINS SHEET NO. 5

DATE	REVISION	REVISED BY	L.S. NO.
2005	adjoining sheet #	J.D. BERGLER	37181
2016	remove phantom LL 8834 L13.13	J.D. BERGLER	37181
2020	add lots 834/34.11,34.12	J.D. BERGLER	37181

MIDDLESEX COUNTY UTILITY AUTHORITY
(EXEMPTED)
BLOCK 834
LOTS 4.16,4.17,4.18,4.19,4.22,4.23,34.05



NEW JERSEY DEPARTMENT OF THE TREASURY
DIVISION OF TAXATION
PROPERTY ADMINISTRATION
APPROVED AS A TAX MAP PURSUANT TO THE AUTHORITY OF
N.J.A.C. 17:27B-10.1
FOR THE DIRECTOR, DIVISION OF TAXATION
James J. Cole C.T.A.
TAXES & COLLECTOR LOCAL ASSESSMENT COMPLIANCE
Scott C. DeMatteo C.T.A.
SCOTT C. DEMATTEO, A PROFESSIONAL FIELD REPRESENTATIVE
DATE: DEC 20 2004 SERIAL NO. 852

THIS MAP HAS BEEN DRAWN USING COMPUTER AIDED
DRAFTING/DESIGN (CAD/D) AND COORDINATE
GEOMETRY (COGO)

TAX MAP
EAST BRUNSWICK TOWNSHIP
MIDDLESEX COUNTY, NEW JERSEY
SCALE: 1" = 200' DATE :5-1-2003
JOHN D. BERGLER
LICENSED LAND SURVEYOR No. 37181
195 WASHINGTON ROAD
SAYREVILLE, NEW JERSEY

ADJOINS SHEET NO. 3.02

BOROUGH OF SOUTH RIVER

BOROUGH OF SAYREVILLE
MUNICIPAL SOUTH RIVER BOUNDARY
MUNICIPAL BOUNDARY