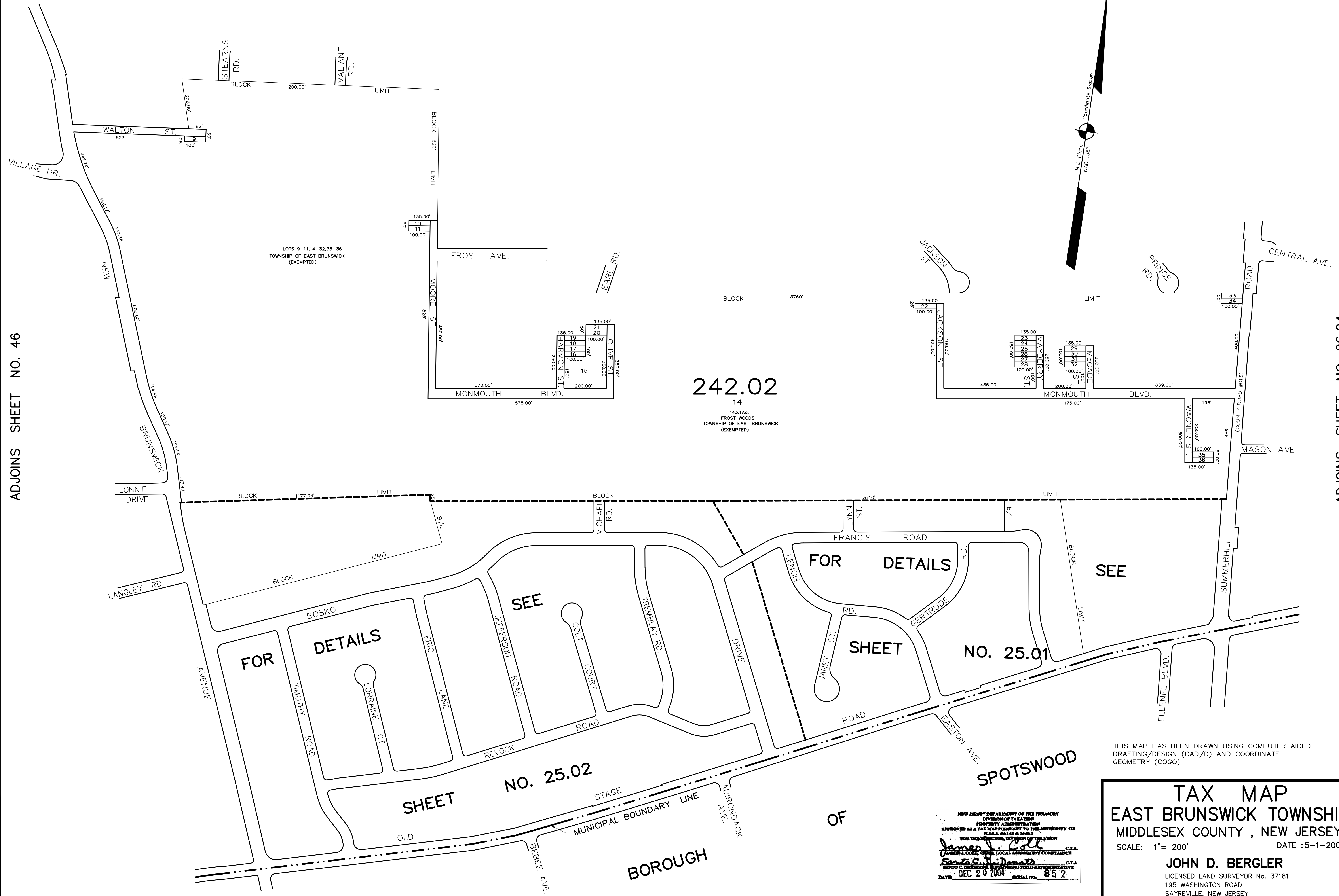


ADJOINS SHEET NO. 24



ADJOINS SHEET NO. 46

ADJOINS SHEET NO. 26.04

242.02
 14
 143.1Ac.
 FROST WOODS
 TOWNSHIP OF EAST BRUNSWICK
 (EXEMPTED)

LOTS 9-11,14-32,35-36
 TOWNSHIP OF EAST BRUNSWICK
 (EXEMPTED)

THIS MAP HAS BEEN DRAWN USING COMPUTER AIDED
 DRAFTING/DESIGN (CAD/D) AND COORDINATE
 GEOMETRY (COGO)

NEW JERSEY DEPARTMENT OF THE TREASURY
 DIVISION OF TAXATION
 APPROVED AS A TAX MAP PURSUANT TO THE AUTHORITY OF
 N.J.A.C. 17:28 & 28:2.1
 FOR THE DIRECTOR, DIVISION OF TAXATION
James J. ...
 COUNTY & LOCAL GOVERNMENT COMPLIANCE
 JOHN D. BERGLER
 DATE: DEC 20 2004 SERIAL NO. 852

TAX MAP
EAST BRUNSWICK TOWNSHIP
MIDDLESEX COUNTY, NEW JERSEY
 SCALE: 1" = 200' DATE :5-1-2003
JOHN D. BERGLER
 LICENSED LAND SURVEYOR No. 37181
 195 WASHINGTON ROAD
 SAYREVILLE, NEW JERSEY